

# Extended Communicator Suite

for  
Nokia 9210/9290 Communicator

PSI NT (PSILoc)  
<http://www.psiloc.com/>

Installation Guide

## Installation

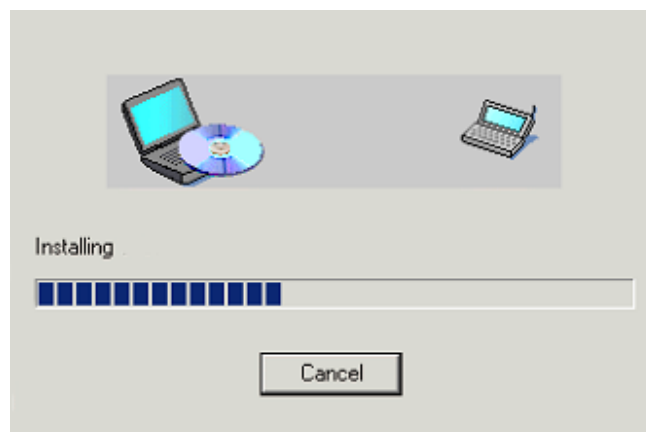
Before installing current version of **Extended Communicator Suite** please uninstall any previous versions of applications contained in this package installed in your machine (if any). In order to uninstall previous versions go to **Control Panel** and use **Install/Remove** application by selecting appropriate application name from the list and pressing **Remove** button.

Now you can install the newest version. **Extended Communicator Suite** package is delivered in form of standard SIS installation file. You have to perform the installation process of this file according to your Nokia Communicator User Manual:

1. Check whether **PC Suite** application is running on your PC. If not – start it.
2. Connect your Nokia Communicator to PC using standard **data cable** (DLR-2L) and wait for PC Suite to establish connection with Communicator

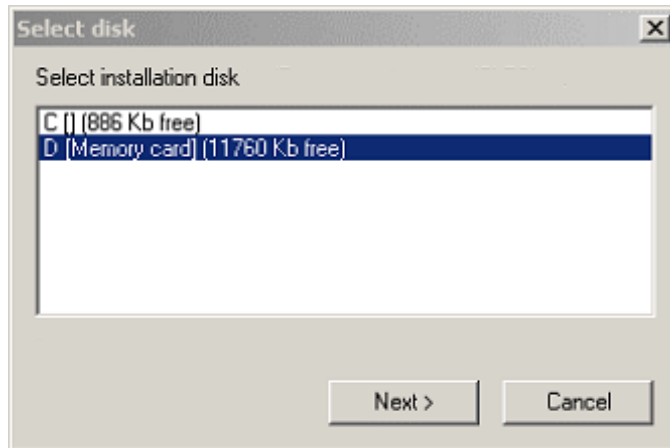


3. Double-click your **SIS** file using left mouse button – this will launch PC Suite's Installer.



4. Select **destination disk** for the installation. Choose **C:** drive (internal memory) if you work with multiple memory cards to assure functionality of the application even if the card is removed/changed or **D:** drive

(memory card) if you work with single MMC card to conserve internal memory.



Installation is complete. Now you can **register** each installed application by entering **registration code**. If you don't have registration code, the programs will run in time-limited trial version.