

Extended Communicator Suite

for
Nokia 9210/9290 Communicator

PSI NT (PSILoc)

<http://www.psiloc.com/>

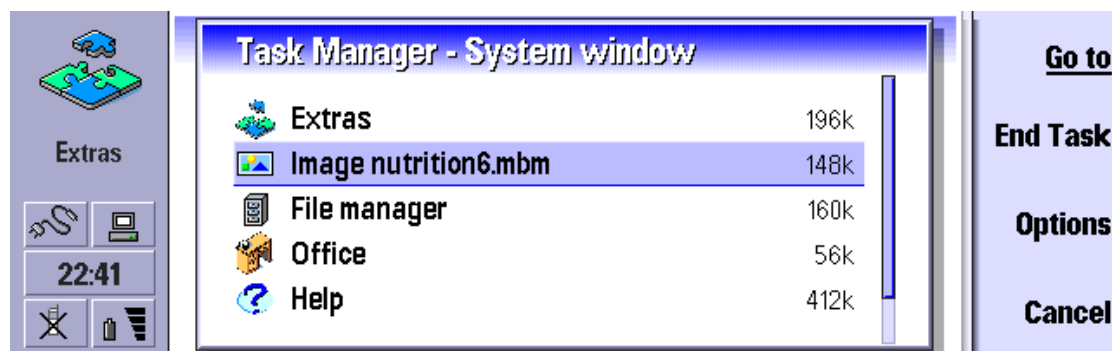
Application Guide

Extended Communicator Suite is a selection of the most important productivity applications for Nokia 9210 and 9290 Communicator. The package contains: **Task Manager**, **Extended Messaging**, **Extended Extras** and **Extended Recorder**. The following Application Guide describes all package contents.

TASK MANAGER

Introduction

Task Manager is a tool which implements several important functions missing from Nokia 9210 Communicator operating system. It integrates with the system and is fully transparent during normal work. Task Manager's window is invoked with **Desk** button (pressing Desk button twice hides Task Manager and opens Desk screen). Accessing Task Manager this way is very quick and convenient. Additionally, one can change the activation hotkey to any other button or key combination in Settings.

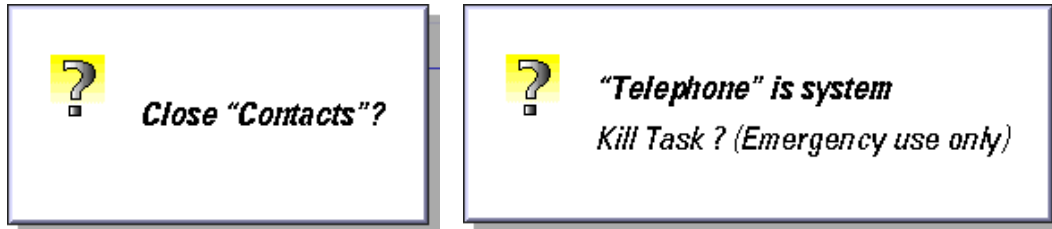


Task Manager provides following functions:

Managing and closing active tasks

Press **Desk** button to invoke main Task Manager window containing a list of active tasks. You can now select the desired application from the list and press **End task** to close it. Closing unused tasks provides more free memory for other applications, which is especially useful in case of applications which require large amounts of RAM, like Java programs or multimedia applications. Task Manager also allows closing tasks which once started cannot be ended from the system, like Messaging, Internet, Calendar etc. Some applications

(e.g. frozen or hanging tasks) cannot be closed in the usual way. Such tasks can be **killed** (Shift+End tasks), but this option should only be applied in emergency.



If you need to free a large amount of memory, you can **close all open tasks** at once. This can be done using Ctrl+End task hotkey.

Main Task Manager window can also be used to toggle between running applications. Just select one of the applications from the list and press **Go to** button to bring this application to the front.

Freeing and defragmenting memory

Besides closing active tasks, one can also free memory by flushing redundant data and defragmenting it. **Compress memory** option can be accessed by pressing **Options** button in main Task Manager dialog. This option can be used frequently as it recovers memory which actually is free but was not returned to the system by other (already closed) applications. Compress memory function merges fragments into one large free block which can be allocated by other programs.

Task Manager provides **information about free operating (SDRAM) memory**. It is shown in the bottom line of "About" dialog which can be invoked with **Options** button. After applying **Compress memory** function one can press **Options** button one more time to see the updated information about available internal memory.



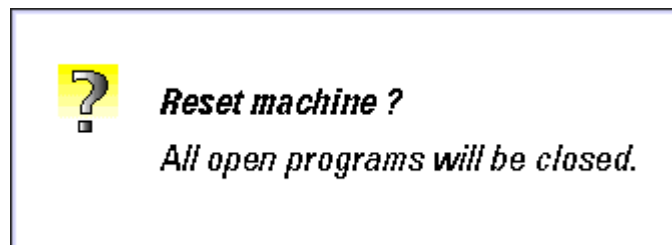
Software restart

Nokia 9210 Communicator can only be restarted by removing and reconnecting the battery. Frequent use of this method can make the battery loose which may result in data loss.

Task Manager provides **software restart** function. Now you can reboot your Communicator via a keyboard hotkey, without removing the battery. Software restart can be invoked in two ways:

- **Reset machine** button is available after pressing **Options** button on main Task Manager screen
- One can press **Ctrl-Chr-Backspace** hotkey anytime and anywhere – it is available from every menu and application and it works similarly to Ctrl-Alt-Del hotkey in Microsoft Windows.

In both cases Task Manager will require a confirmation of restart operation by pressing either **Yes** button or **Enter** key. Before proceeding, Task Manager closes all open applications and saves all user data to disk.



Changing location of Help key

Many Nokia 9210 Communicator users report that the default location of Help key causes problems. It often gets pressed accidentally and users have to wait until Help application fully loads to be able to close it...

With Task Manager one can move Help key to any other location. This can be done in Task Manager's Settings window, which can be accessed by pressing **Options** and then **Settings** button. Just locate **Swap Help key with** option and press a key combination, which you want to assign Help function to.

Toggling between active applications

You can quickly move between all active applications. Press and hold **Ctrl** key and then press **Space** to display a small window showing application's name and icon. Each press of **Space** key switches to the next active program. Release **Ctrl** key to bring the chosen application to front. Pressing **Ctrl** key with **Shift** allows toggling between applications in reverse order.

Setting max brightness level

TFT screens become dark and illegible in direct sunlight. You can quickly set max brightness level of your display by pressing Task Manager's hot key which can be set in **Settings** window. This way you can make your screen much more legible even in bright sunlight.

Other functions

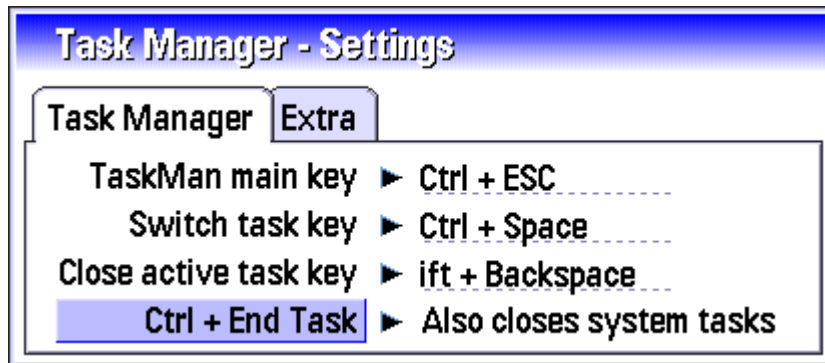
Task Manager also provides other useful functions, like **Power off** (switching Communicator into sleep mode via hotkey), **Close active task** (closing frontmost application via hotkey) or **Auto compress** (automatic, periodic execution of **Compress memory** function).

Settings

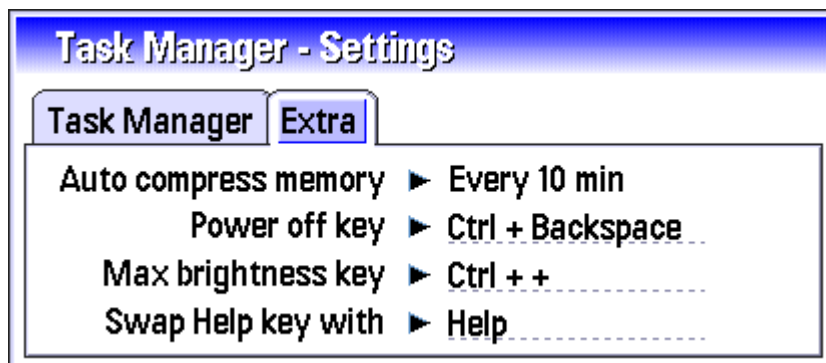
Task Manager's **Settings** window allows adjusting all shortcuts and hotkeys to meet one's preferences. **Settings** can be accessed by pressing **Options** button and then **Settings** button on main Task Manager's screen.

Following options are available:

- **Task Man main key** – invokes main Task Manager window containing application list
- **Switch task key** – hotkey for toggling between active applications
- **Close active task key** – hotkey for closing frontmost application
- **Ctrl+End Task** – one can decide whether this option should also close system tasks



- **Auto compress memory** – provides automatic execution of **Compress memory** function every x minutes
- **Power off key** – hotkey for switching PDA into sleep mode
- **Max brightness key** – hotkey for setting max brightness level of Communicator display
- **Swap Help key with** – new key for invoking built-in system Help function.



EXTENDED MESSAGING

Introduction

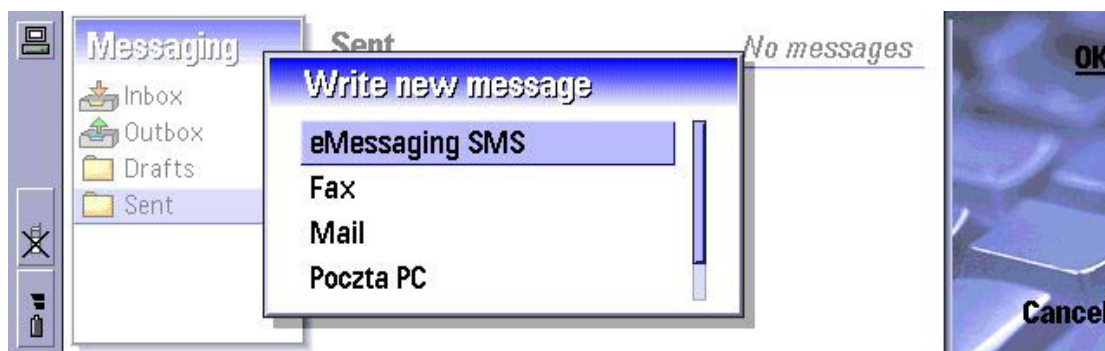
Extended Messaging provides full support for **smart messaging** known from other Nokia phones in Nokia 9210/9290 Communicator.

After installing **Extended Messaging** in your Communicator, you will be able to send, receive or forward **picture messages, operator logos, CLI icons (group logos), screen savers, ringing tones, Flash (class 0) SMSes, Blinking SMSes** and also **any files via SMS**.

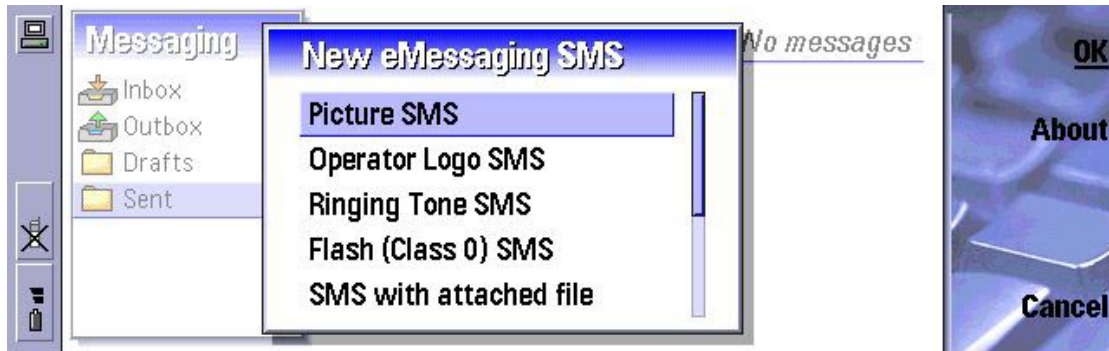
Extended Messaging fully integrates with built-in **Messaging** application, which means that all operations are made within Messaging and there is no need to use any other additional programs.

Sending messages

Simply start **Messaging** application by pressing **Messaging** blue button above the keyboard and then press **Ctrl-N**. You will be presented with a list of message types. Select **eMessaging SMS** from the list and press **OK**.



You will see another list with all smart messaging types supported by **Extended Messaging**. Current version supports following types: **Picture SMS, Operator Logo SMS, Ringing tone SMS, Flash (class 0) SMS, SMS with attached file, Blinking SMS, Group logo (CLI icon) SMS, Special Picture SMS** and **Screen saver SMS**.



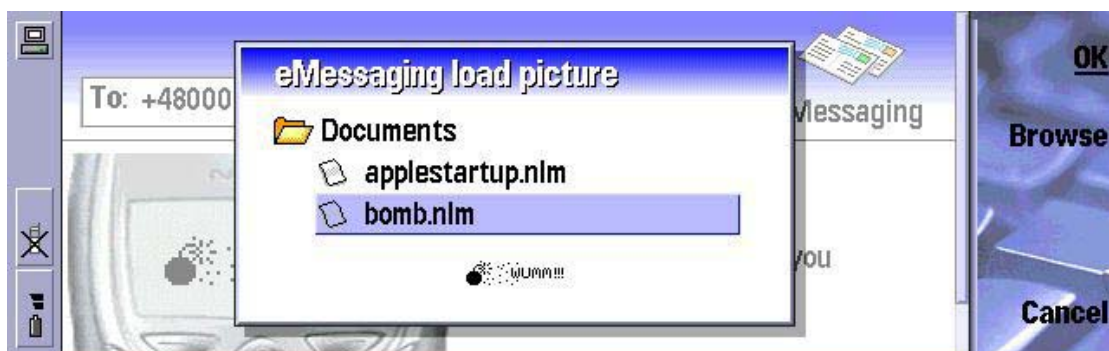
Select your desired message type to proceed to message editor where you can select a picture to be send and type your message.

Picture SMS, Operator Logo, CLI icon, Screen Saver

When you select one of the above message types, you will be presented with a screen looking similar to this below:

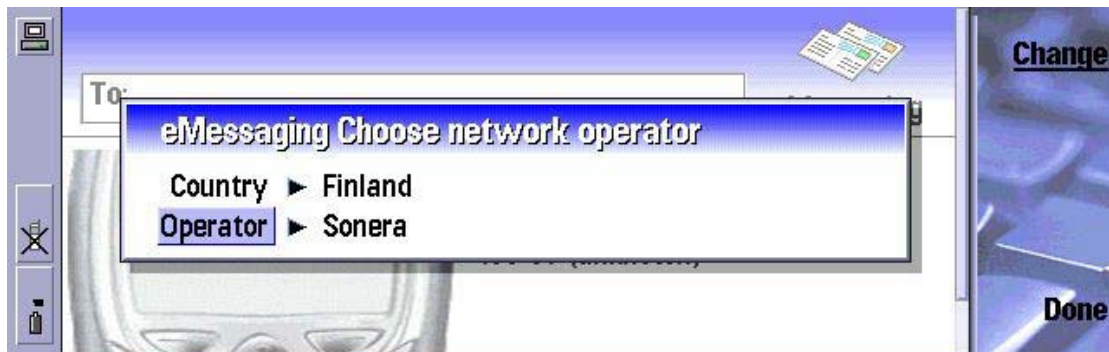


Here you can select a picture to be sent using **Load picture** button. It will open a **picture browser**. Picture browser is equipped with **preview** function to help you locate your desired picture.



Picture SMSes allow sending pictures along with short text message. You can type your text directly in the editor before or after loading the picture.

When sending an **operator logo** one has to provide information about **destination GSM network** (used by the logo recipient). Extended Messaging is equipped with complete **list of all existing GSM networks** so you can easily select proper network by its home country and operator name.



Ringing tone

Extended Messaging supports sending ringing tones via SMS. Press **Load file** to attach ringing tone to your message and select the recipient.



Flash SMS, Blinking SMS

Flash SMS (class 0 SMS) is a special type of short message, which will be immediately displayed on recipient's phone screen. **Blinking SMS** is a message which blinks on recipient's phone display, being a good method of sending important data.

WARNING: Flash messages and blinking messages are supported by selected phone models. If recipient's phone doesn't support flash or blinking messages, they will be shown as normal SMSes.

Special Picture SMS, SMS with attached file

Extended Messaging takes advantage of Nokia Communicator capabilities and introduces two more types of 'special' messages: **Special picture SMS** and **SMS with attached file**.

Special picture SMS allows sending any picture via SMS, while **SMS with attached file** allows sending files of any type and any size. Both these message types can be correctly received only on Nokia Communicator phones and require either full version of **Extended Messaging** or freeware **Extended Messaging Reader** (described below).



For both the above message types simply choose your desired type from the list and press **Load picture** or **Load file** accordingly to attach a picture or file to your SMS.



Extended Messaging Reader (eMessaging Reader)

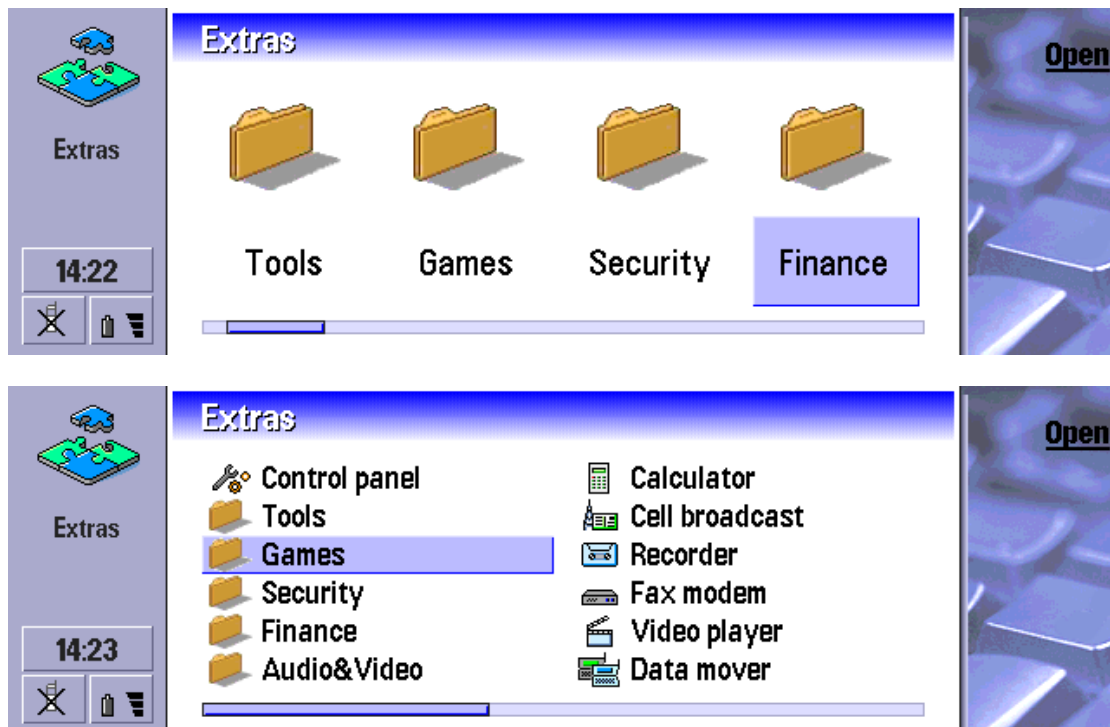
Some of the message types described above can only be received/displayed on a Communicator equipped with **Extended Messaging**. People who want to receive smart messages sent using Extended Messaging but don't own the full version can use **freeware** application called **Extended Messaging Reader**. eMessaging Reader allows receiving and displaying smart messages sent using full version. It is impossible to **send** messages from the Reader and it also features some other limitations like displaying received pictures with reduced resolution.

EXTENDED EXTRAS

Introduction

Extended Extras provides the user with important and useful feature missing in Nokia 9210/9290 Communicator: **creating folders** within application groups: Extras, Office, Internet and on Desk.

Such folders make it possible to group applications into separate categories (games, utilities, business, security etc), provide quick access to particular programs and allow keeping installed applications in order.

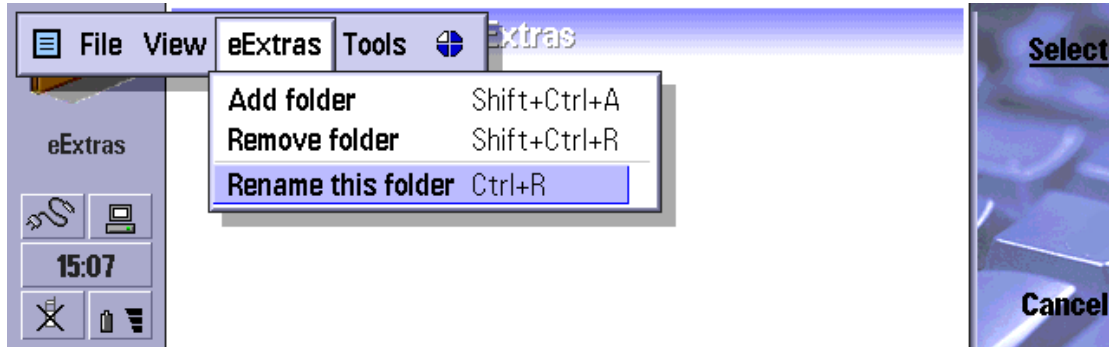


New applications for Nokia 9210/9290 Communicator appear almost everyday but from now on you don't have to scroll Extras searching for a particular program.

Renaming folders

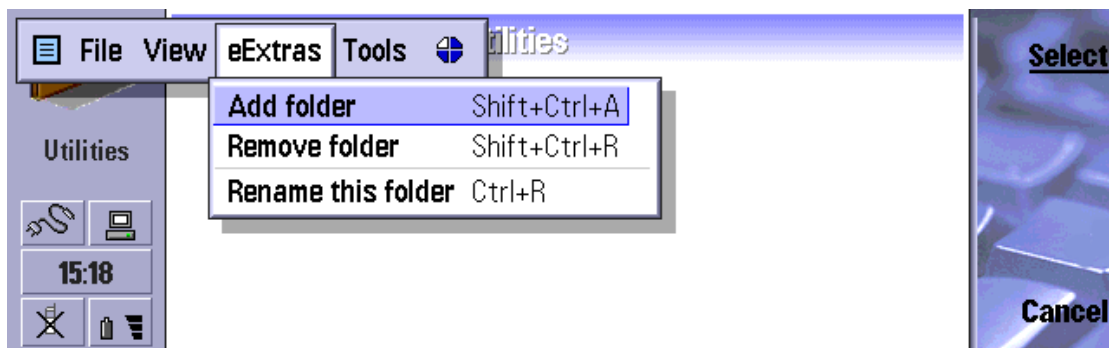
After installing **Extended Extras** you will see a default, empty folder called **eExtras** created in Extras group. You can change its name to anything you

want. Just open the folder, select **Rename this folder** from **eExtras** menu and type a new name in **Rename** dialog.



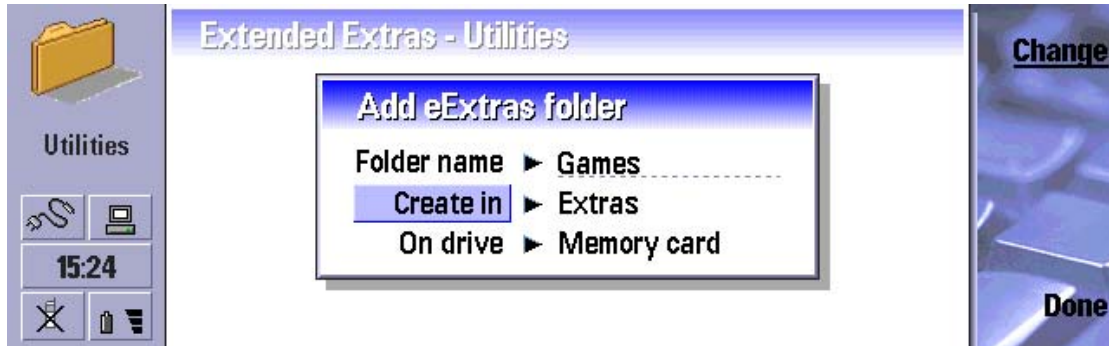
Creating new folders

You can have multiple folders in any of default application groups. To create a new folder simply open any of the existing folders and select **Add folder** from **eExtras** menu.



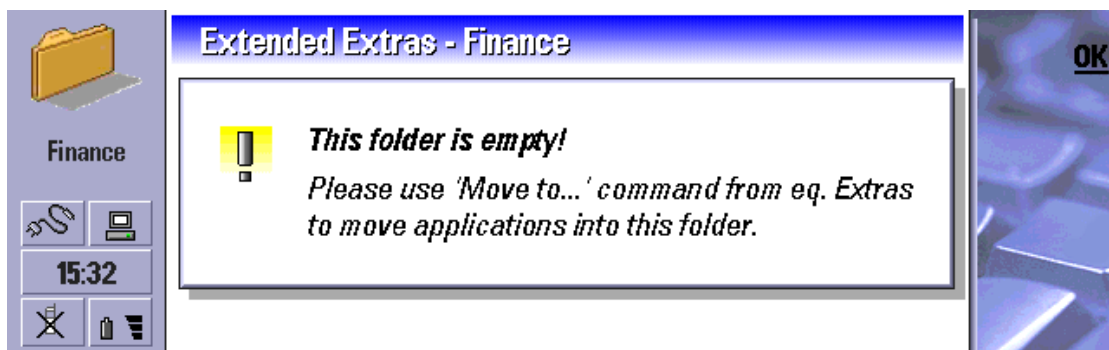
You will be presented with a dialog where you can give your new folder a name and select application group (Extras, Internet, Office, Desk) and

memory type (Memory card, Internal memory) in which it is going to be created. You can also create sub-folders within folders created earlier.

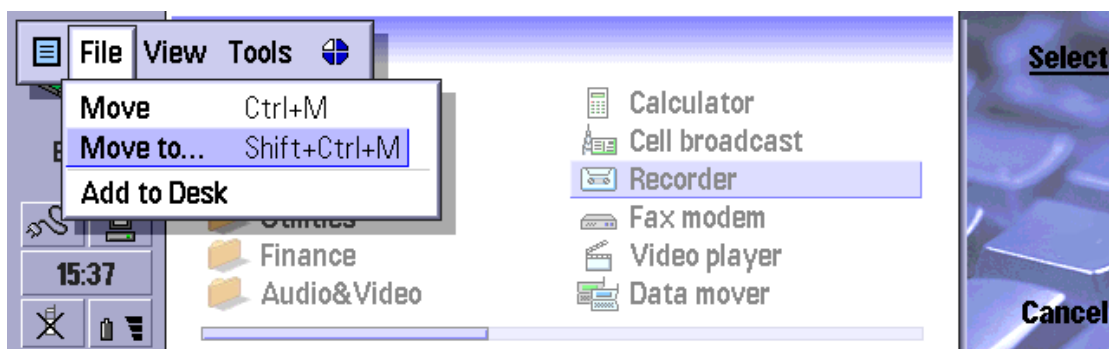


Moving applications into new folders

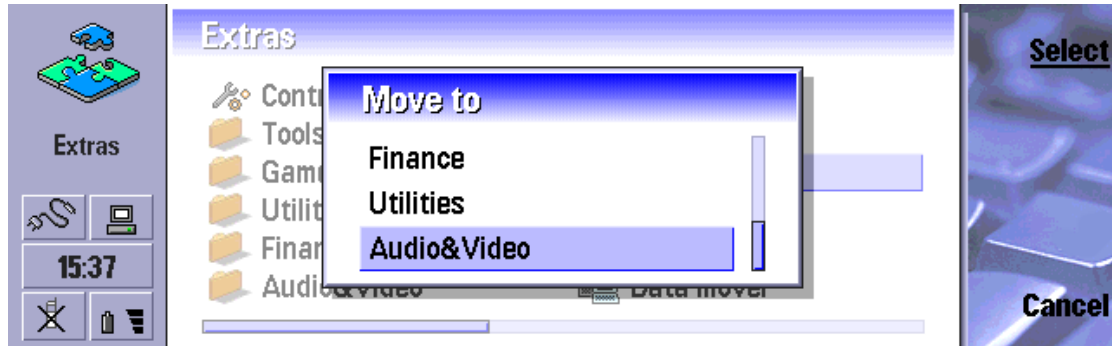
New folders are empty. When opening a newly created folder you will be presented with following message:



Applications can be moved into new folders using **Move to** command (available in each application group's menu) or by pressing **Shift Ctrl M** hotkey.

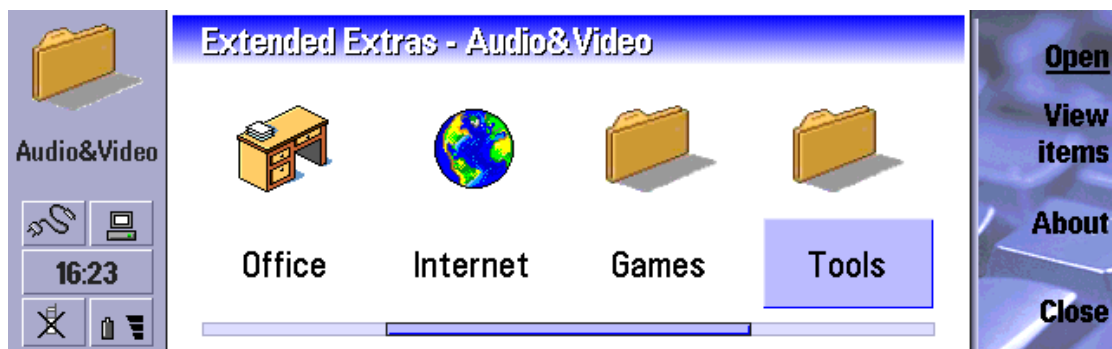


Destination folder can then be selected from the following list:



View folders

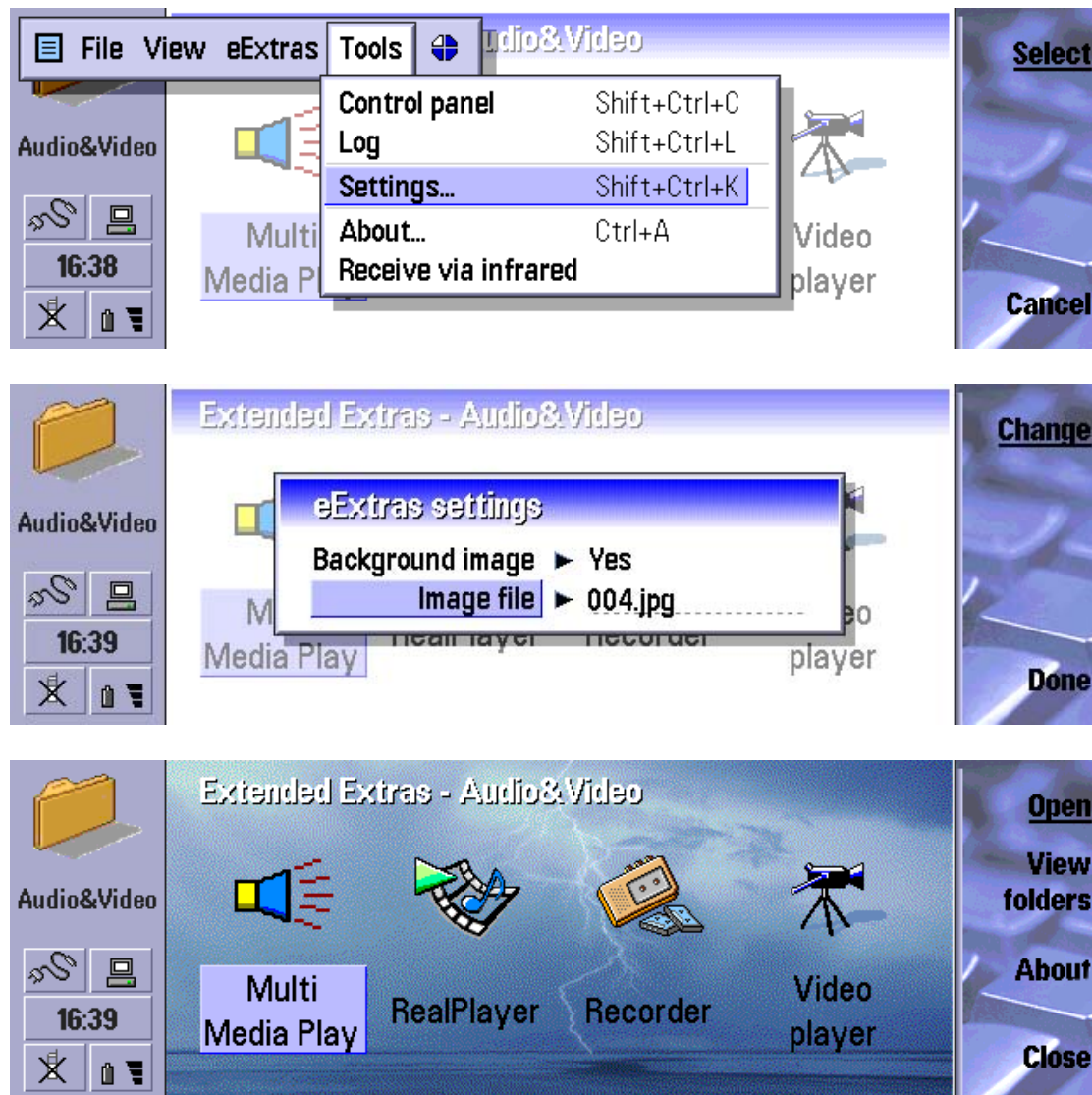
View folders function provides the user with quick access to all existing folders and application groups. Just press **View folders** button in any of **eExtras** folders to display all available folders and application groups. Simply select a folder/group you wish to open and hit **Open** button or **Enter** key.



In **Folders** view **View folders** button changes to **View items**. You can press it to go back to last opened folder.

Customization

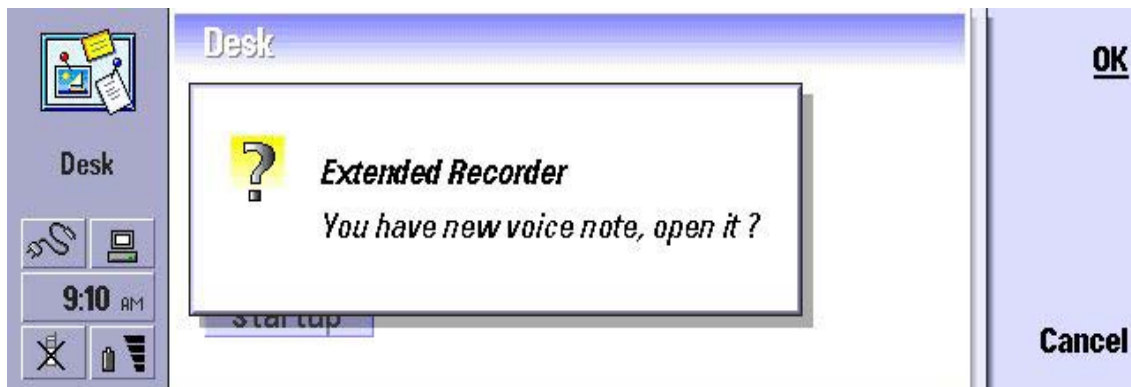
You can customize your folders with **background pictures**. Each folder can have its own background picture. You can choose your picture in **Settings** window which can be invoked using **Settings** command in **Tools** menu.



EXTENDED RECORDER

Introduction

Extended Recorder is a tool which implements a very important and useful function missing in Nokia 9210 (although it was present in 9110): access to Digital Recorder from phone side and the ability of creating voice notes and recording phone conversations without opening Communicator cover and browsing through several menus and screens on PDA side. Extended Recorder's functionality via phone keypad can be **profiles, limited to one selected profile or restricted to all but one profile.**



Extended Recorder provides following functions:

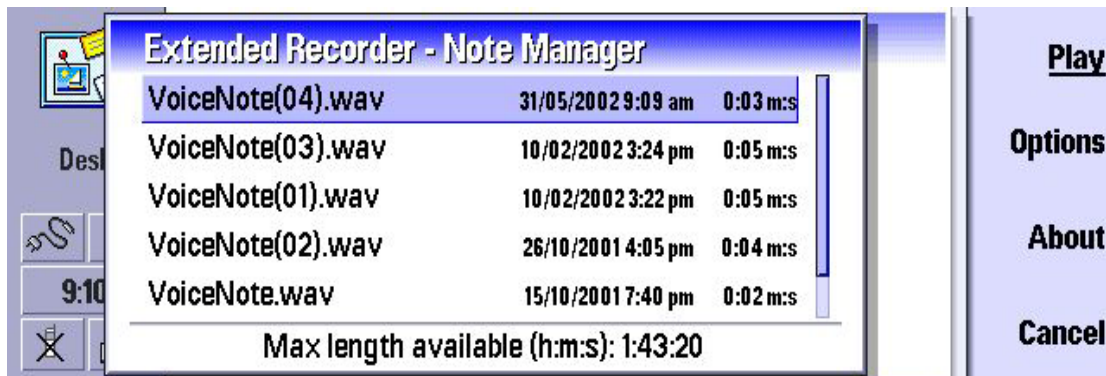
Recording notes and voice calls

Extended Recorder can be used from phone side in two modes (depending on your settings): you can make your recordings by either **pressing and holding** any key (recording stops when the key is released) or by **pressing a key to start** recording and then **pressing it once again to finish**. **Extended Recorder's** functions can also be accessed from PDA side via hotkeys which can be customized in **Settings**. This way you can quickly invoke main application screen, display a list of stored notes and start new recording.



Managing your notes

Note Manager can be invoked anytime via a hotkey (default: Ctrl-Extras). It provides a list of all stored voice notes and several useful managing functions. First of all it allows **playing back** your notes and **creating new** ones. You can also **delete** notes, **change** their **names** and open them in **Recorder** application which offers several editing options. Note Manager provides information about size and date of each recording and memory space left for new voice notes.

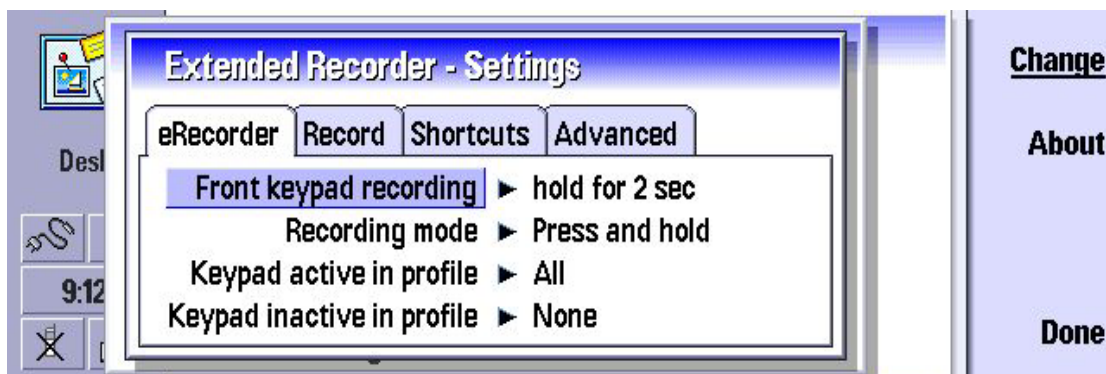


Settings

Extended Recorder's **Settings** window can be accessed from **Note Manager** by pressing **Settings** button.

Following options are available:

- **Front keypad recording** – how long a key has to be pressed (1-3 sec) to start recording or “disabled”
- **Recording mode** – **pressing and holding any key** (recording stops when the key is released) or **pressing a key to start** recording and then **pressing it once again to finish**
- **Keypad active in profile** – All profiles or selected profile
- **Keypad inactive in profile** – None or selected profile



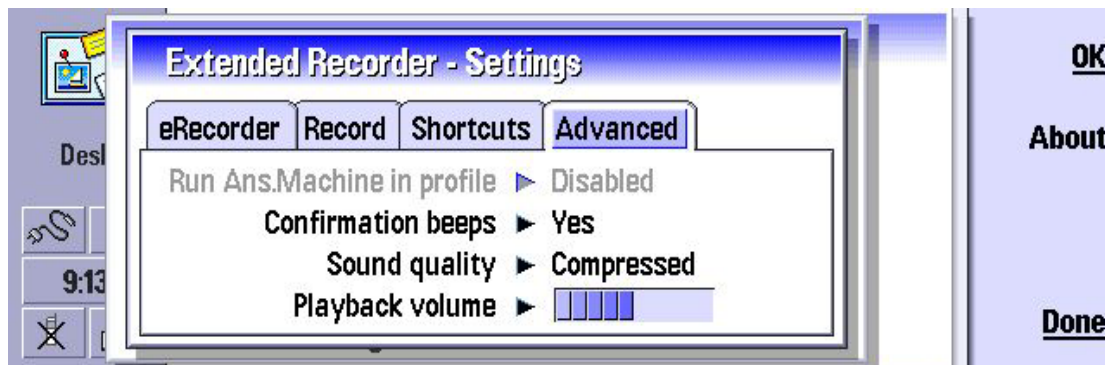
- **When call is active** – Do nothing / Enable 1 sec keypresses. Allows shortening the time of key press required to start recording when call is active
- **Record to** – Single file / Multiple files. You can decide whether new notes should be appended to one common file or stored in separate files
- **Limit single note to** – Recording time can be limited to 0.5/2/3/5 min or unlimited
- **Default folder** – folder and disk (internal memory or memory card) to store voice notes



- **Voice note manager** – hotkey for launching Note Manager
- **Record new note** – hotkey for starting new recording from PDA side
- **Answering machine shortcut** – support for **Answering Machine** application (active when Answering Machine is installed)



- **Run Ans.Machine in profile** – select profile in which **Answering Machine** is active (requires Answering Machine application to be installed)
- **Confirmation beeps** – turns notification signals on or off
- **Sound quality** – Normal / Compressed. Sets quality of recordings. Normal setting provides better quality but the size of WAV file is larger than in Compressed mode.
- **Playback volume** – 10 levels.



Reviews

Reviews of all applications contained in **Extended Communicator Suite** can be found at following Web site:

My-Communicator.com

Purchasing & Contact Information

Extended Communicator Suite package can be obtained at:

<http://www.psiloc.com>

Should you have any questions or comments, please write to:

info@psiloc.com