

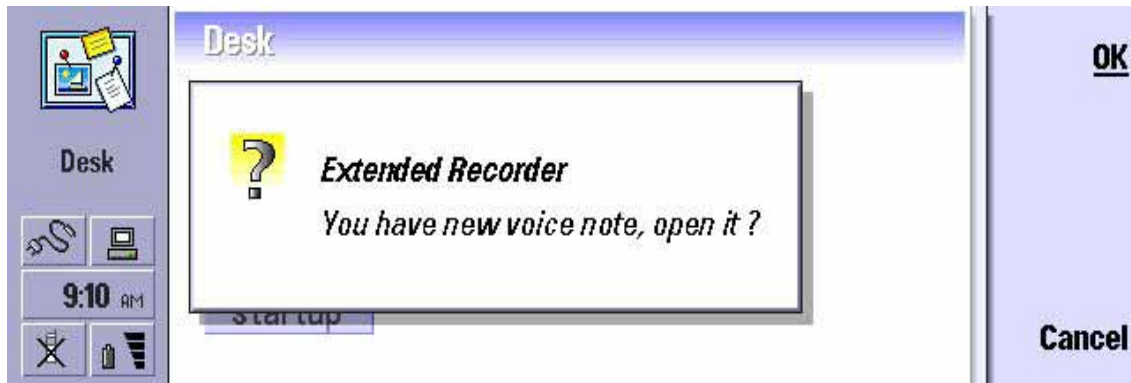
# Extended Recorder

for  
Nokia 9210/9290 Communicator

PSI NT (PSILoc)  
<http://www.psiloc.com/>

Application Guide

**Extended Recorder** is a tool which implements a very important and useful function missing in Nokia 9210 (although it was present in 9110): access to Digital Recorder from phone side and the ability of creating voice notes and recording phone conversations without opening Communicator cover and browsing through several menus and screens on PDA side. Extended Recorder's functionality via phone keypad can be **profiles, limited to one selected profile or restricted to all but one profile**. either activated for all



**Extended Recorder** provides following functions:

## **Recording notes and voice calls**

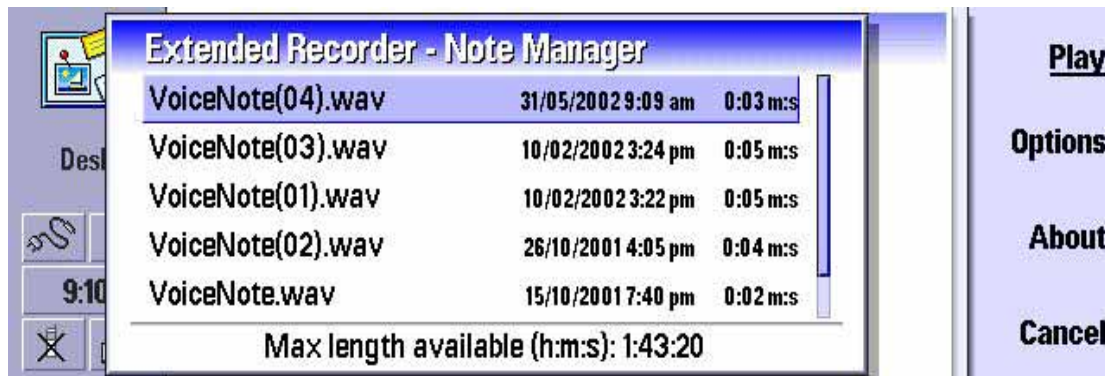
**Extended Recorder** can be used from phone side in two modes (depending on your settings): you can make your recordings by either **pressing and holding** any key (recording stops when the key is released) or by **pressing a key to start** recording and then **pressing it once again to finish**.

**Extended Recorder's** functions can also be accessed from PDA side via hotkeys which can be customized in **Settings**. This way you can quickly invoke main application screen, display a list of stored notes and start new recording.



## Managing your notes

**Note Manager** can be invoked anytime via a hotkey (default: Ctrl-Extras). It provides a list of all stored voice notes and several useful managing functions. First of all it allows **playing back** your notes and **creating new** ones. You can also **delete** notes, **change** their **names** and open them in **Recorder** application which offers several editing options. Note Manager provides information about size and date of each recording and memory space left for new voice notes.

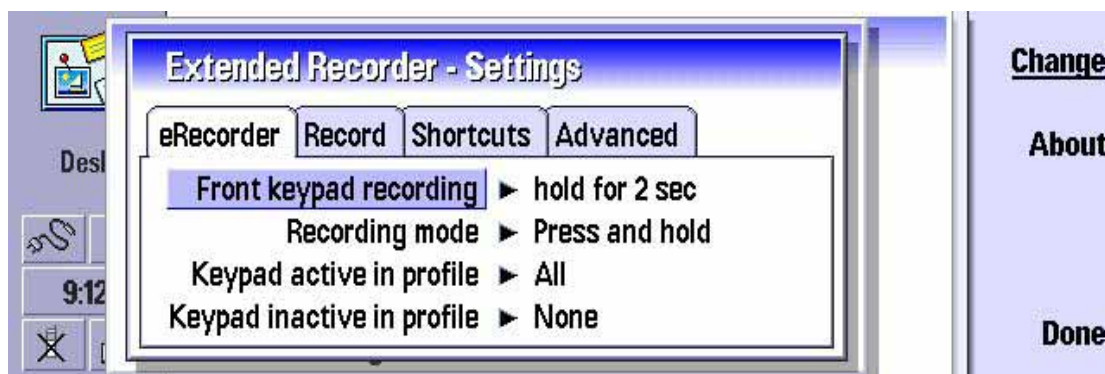


## Settings

Extended Recorder's **Settings** window can be accessed from **Note Manager** by pressing **Settings** button.

Following options are available:

- **Front keypad recording** – how long a key has to be pressed (1-3 sec) to start recording or “disabled”
- **Recording mode** – **pressing and holding any key** (recording stops when the key is released) **or pressing a key to start** recording and then **pressing it once again to finish**
- **Keypad active in profile** – All profiles or selected profile
- **Keypad inactive in profile** – None or selected profile



- **When call is active** – Do nothing / Enable 1 sec keypresses. Allows shortening the time of key press required to start recording when call is active
- **Record to** – Single file / Multiple files. You can decide whether new notes should be appended to one common file or stored in separate files
- **Limit single note to** – Recording time can be limited to 0.5/2/3/5 min or unlimited
- **Default folder** – folder and disk (internal memory or memory card) to store voice notes



- **Voice note manager** – hotkey for launching Note Manager
- **Record new note** – hotkey for starting new recording from PDA side
- **Answering machine shortcut** – support for **Answering Machine** application (active when Answering Machine is installed)



- **Run Ans.Machine in profile** – select profile in which **Answering Machine** is active (requires Answering Machine application to be installed)
- **Confirmation beeps** – turns notification signals on or off
- **Sound quality** – Normal / Compressed. Sets quality of recordings. Normal setting provides better quality but the size of WAV file is larger than in Compressed mode.
- **Playback volume** – 10 levels.



## Reviews

Review of PsiLoc Crystal packages can be found at following Web site:

[My-Communicator.com](http://My-Communicator.com)

## Purchasing & Contact Information

Current versions of PsiLoc Crystal packages can be obtained at:

<http://www.psiloc.com>

Should you have any questions or comments, please write to:

[info@psiloc.com](mailto:info@psiloc.com)