

Extended Extras

for
Nokia 9210/9290 Communicator

PSI NT (PSILoc)
<http://www.psiloc.com/>

Application Guide

Introduction

Extended Extras provides the user with important and useful feature missing in Nokia 9210/9290 Communicator: **creating folders** within application groups: Extras, Office, Internet and on Desk.

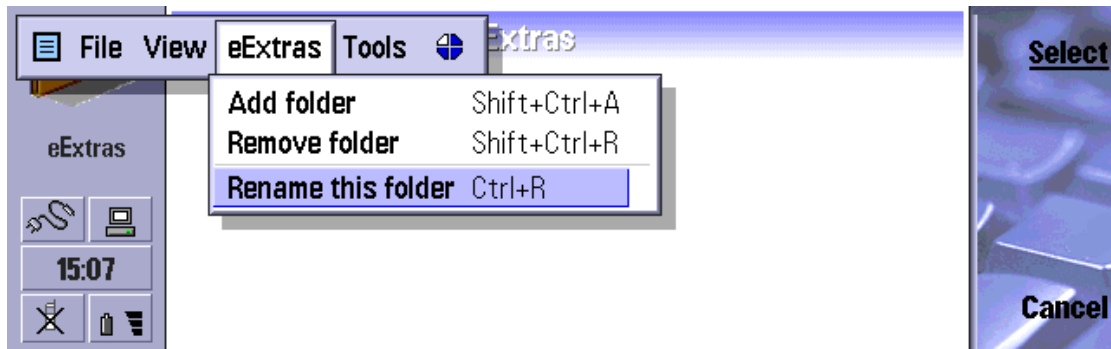
Such folders make it possible to group applications into separate categories (games, utilities, business, security etc), provide quick access to particular programs and allow keeping installed applications in order.



New applications for Nokia 9210/9290 Communicator appear almost everyday but from now on you don't have to scroll Extras searching for a particular program.

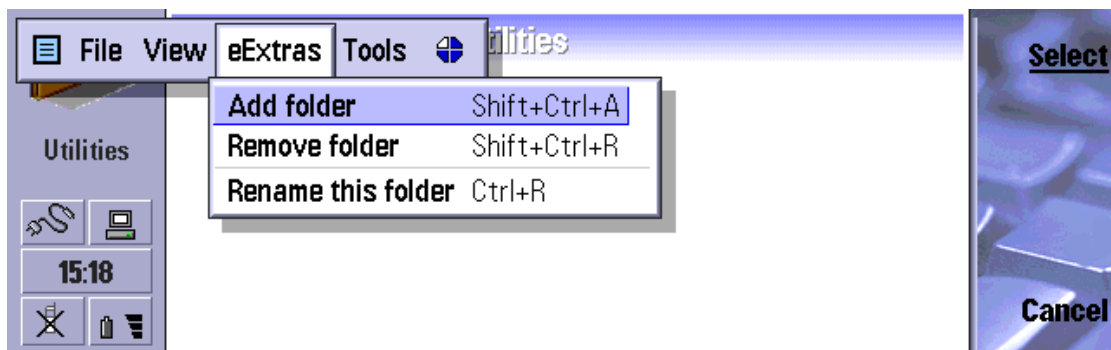
Renaming folders

After installing **Extended Extras** you will see a default, empty folder called **eExtras** created in Extras group. You can change its name to anything you want. Just open the folder, select **Rename this folder** from **eExtras** menu and type a new name in **Rename** dialog.

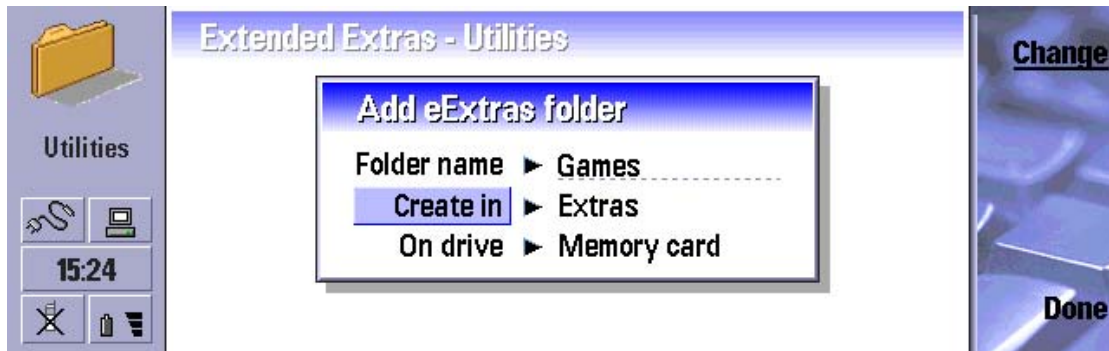


Creating new folders

You can have multiple folders in any of default application groups. To create a new folder simply open any of the existing folders and select **Add folder** from **eExtras** menu.

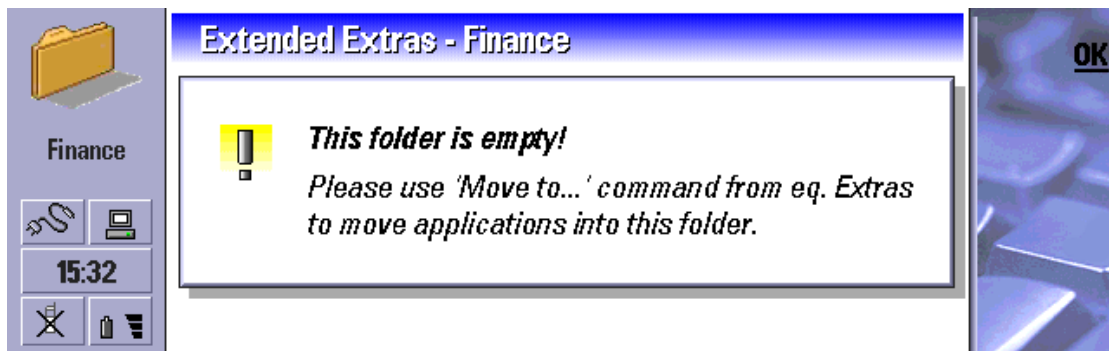


You will be presented with a dialog where you can give your new folder a name and select application group (Extras, Internet, Office, Desk) and memory type (Memory card, Internal memory) in which it is going to be created. You can also created sub-folders within folders created earlier.

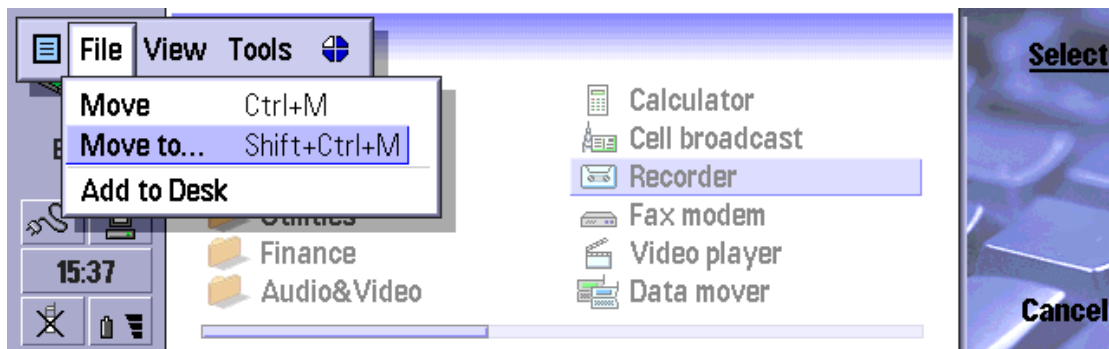


Moving applications into new folders

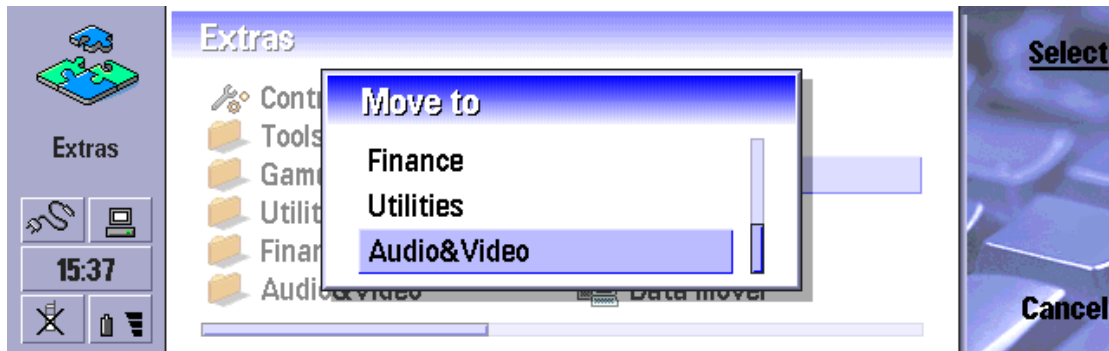
New folders are empty. When opening a newly created folder you will be presented with following message:



Applications can be moved into new folders using **Move to** command (available in each application group's menu) or by pressing **Shift Ctrl M** hotkey.

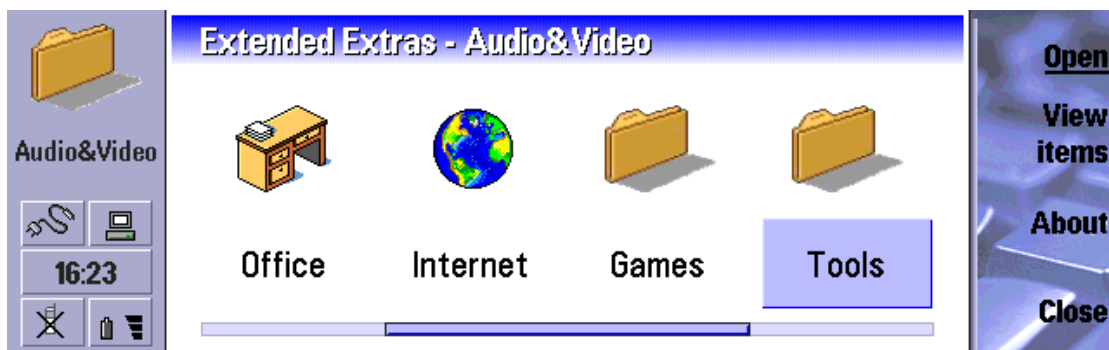


Destination folder can then be selected from the following list:



View folders

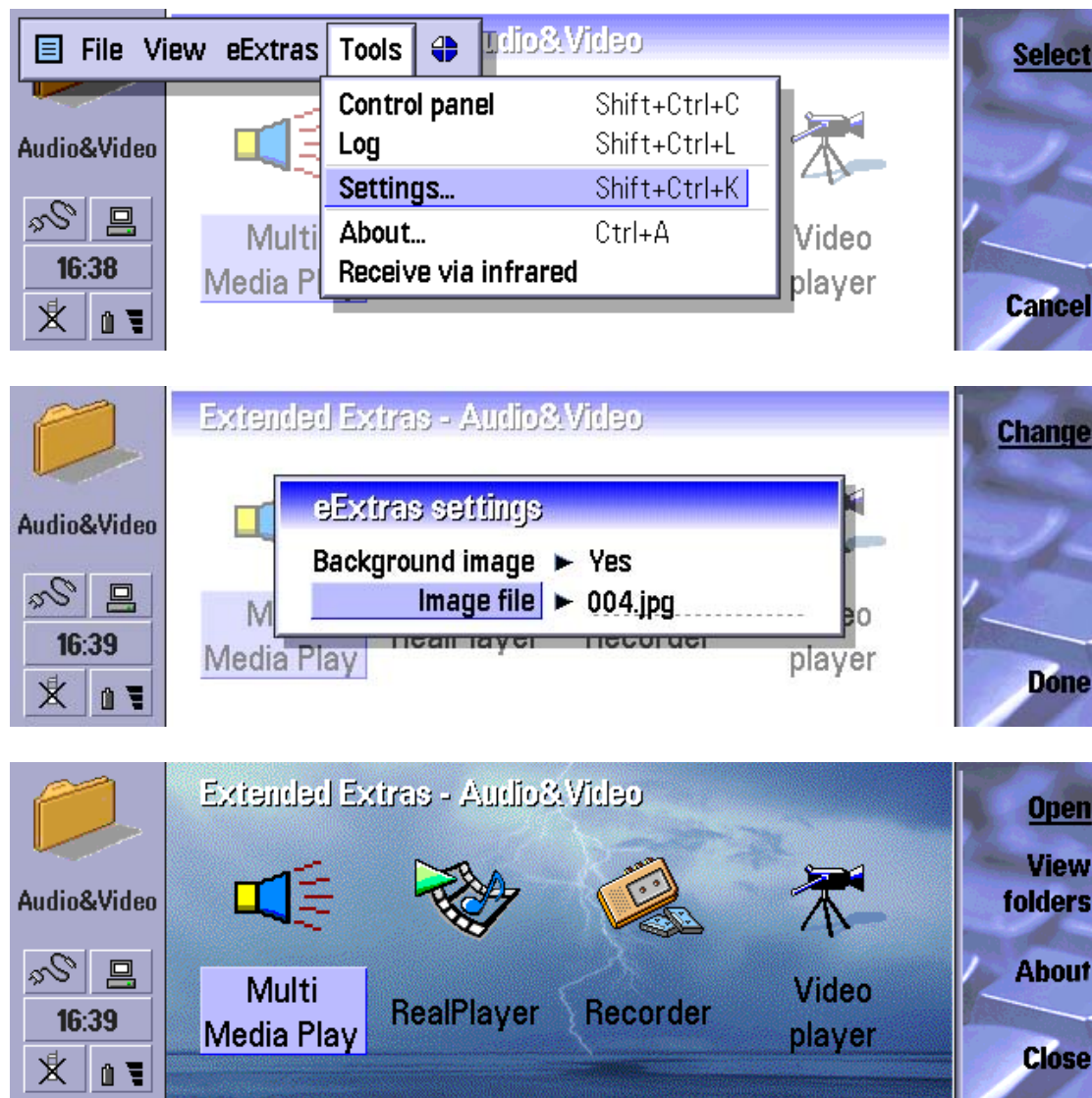
View folders function provides the user with quick access to all existing folders and application groups. Just press **View folders** button in any of **eExtras** folders to display all available folders and application groups. Simply select a folder/group you wish to open and hit **Open** button or **Enter** key.



In **Folders** view **View folders** button changes to **View items**. You can press it to go back to last opened folder.

Customization

You can customize your folders with **background pictures**. Each folder can have its own background picture. You can choose your picture in **Settings** window which can be invoked using **Settings** command in **Tools** menu.



Reviews

Review of PsiLoc Crystal packages can be found at following Web site:

My-Communicator.com

Purchasing & Contact Information

Current versions of PsiLoc Crystal packages can be obtained at:

<http://www.psiloc.com>

<http://My-Communicator.com>

Should you have any questions or comments, please write to:

info@psiloc.com