

# Extended Messaging

for  
Nokia 9210/9290 Communicator

PSI NT (PSILoc)  
<http://www.psiloc.com/>

Application Guide

## Introduction

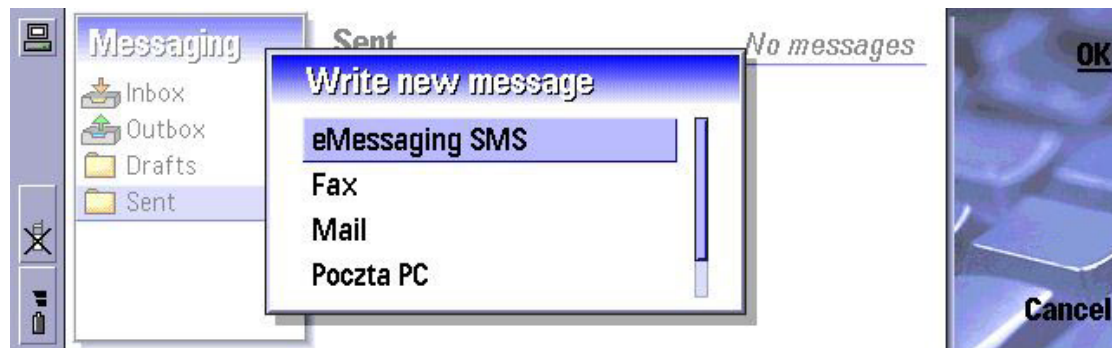
**Extended Messaging** provides full support for **smart messaging** known from other Nokia phones in Nokia 9210/9290 Communicator.

After installing **Extended Messaging** in your Communicator, you will be able to send, receive or forward **picture messages, operator logos, CLI icons (group logos), screen savers, ringing tones, Flash (class 0) SMSes, Blinking SMSes** and also **any files via SMS**.

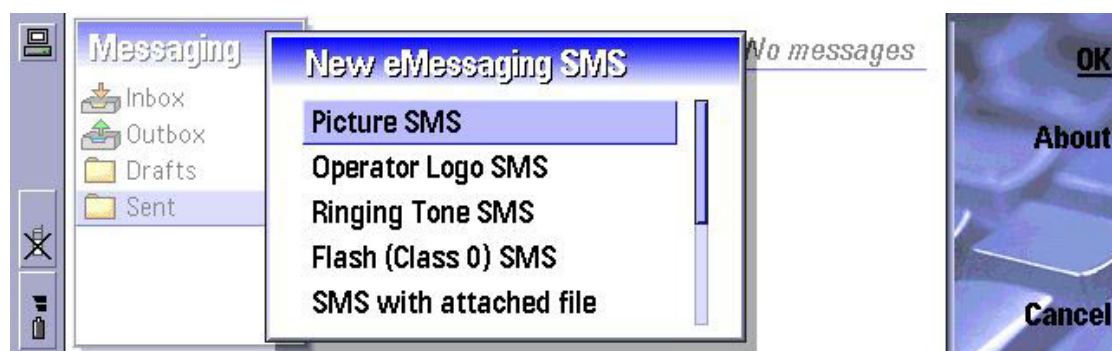
**Extended Messaging** fully integrates with built-in **Messaging** application, which means that all operations are made within Messaging and there is no need to use any other additional programs.

## Sending messages

Simply start **Messaging** application by pressing **Messaging** blue button above the keyboard and then press **Ctrl-N**. You will be presented with a list of message types. Select **eMessaging SMS** from the list and press **OK**.



You will see another list with all smart messaging types supported by **Extended Messaging**. Current version supports following types: **Picture SMS, Operator Logo SMS, Ringing tone SMS, Flash (class 0) SMS, SMS with attached file, Blinking SMS, Group logo (CLI icon) SMS, Special Picture SMS** and **Screen saver SMS**.



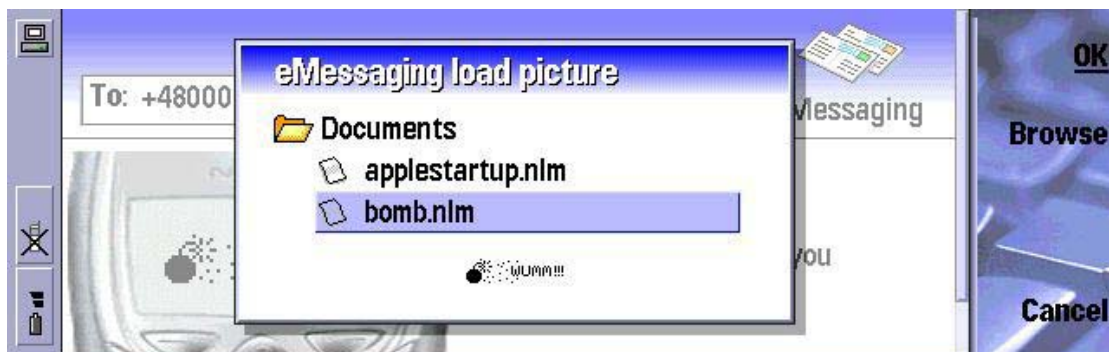
Select your desired message type to proceed to message editor where you can select a picture to be send and type your message.

## Picture SMS, Operator Logo, CLI icon, Screen Saver

When you select one of the above message types, you will be presented with a screen looking similar to this below:

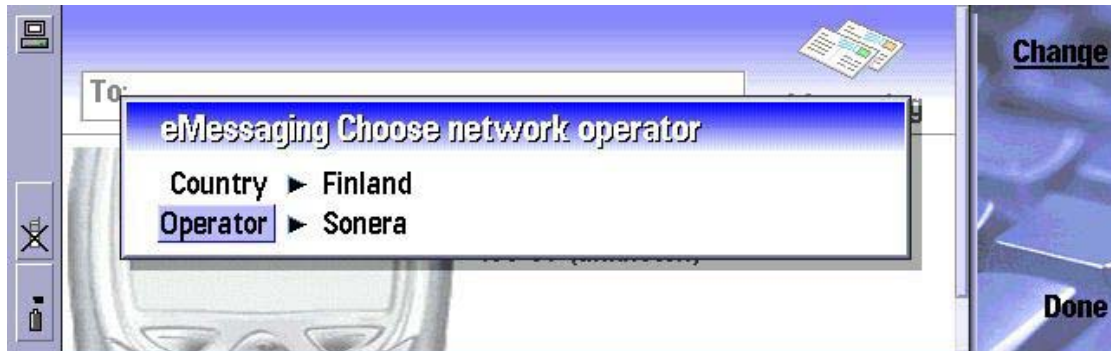


Here you can select a picture to be sent using **Load picture** button. It will open a **picture browser**. Picture browser is equipped with **preview** function to help you locate your desired picture.



**Picture SMSes** allow sending pictures along with short text message. You can type your text directly in the editor before or after loading the picture.

When sending an **operator logo** one has to provide information about **destination GSM network** (used by the logo recipient). Extended Messaging is equipped with complete **list of all existing GSM networks** so you can easily select proper network by its home country and operator name.



## Ringing tone

**Extended Messaging** supports sending ringing tones via SMS. Press **Load file** to attach ringing tone to your message and select the recipient.



## Flash SMS, Blinking SMS

**Flash SMS (class 0 SMS)** is a special type of short message, which will be immediately displayed on recipient's phone screen. **Blinking SMS** is a message which blinks on recipient's phone display, being a good method of sending important data.

**WARNING:** Flash messages and blinking messages are supported by selected phone models. If recipient's phone doesn't support flash or blinking messages, they will be shown as normal SMSes.

## Special Picture SMS, SMS with attached file

**Extended Messaging** takes advantage of Nokia Communicator capabilities and introduces two more types of 'special' messages: **Special picture SMS** and **SMS with attached file**.

**Special picture SMS** allows sending any picture via SMS, while **SMS with attached file** allows sending files of any type and any size. Both these message types can be correctly received only on Nokia Communicator phones and require either full version of **Extended Messaging** or freeware **Extended Messaging Reader** (described below).



For both the above message types simply choose your desired type from the list and press **Load picture** or **Load file** accordingly to attach a picture or file to your SMS.



## Extended Messaging Reader (eMessaging Reader)

Some of the message types described above can only be received/displayed on a Communicator equipped with **Extended Messaging**. People who want to receive smart messages sent using Extended Messaging but don't own the full version can use **freeware** application called **Extended Messaging Reader**. eMessaging Reader allows receiving and displaying smart messages sent using full version. It is impossible to **send** messages from the Reader and it also features some other limitations like displaying received pictures with reduced resolution.

## Reviews

Review of PsiLoc Crystal packages can be found at following Web site:

[My-Communicator.com](http://My-Communicator.com)

## Purchasing & Contact Information

Current versions of PsiLoc Crystal packages can be obtained at:

<http://www.psiloc.com>

Should you have any questions or comments, please write to:

[info@psiloc.com](mailto:info@psiloc.com)