

SuperTree

User Manual

Corisoft

Date : April 1, 2005

<u>INTRODUCTION</u>	<u>5</u>
<u>1. MANAGE DATABASE STRUCTURE</u>	<u>6</u>
<u>2. ADD, EDIT AND DELETE RECORDS</u>	<u>9</u>
<u>3. COLLAPSE AND EXPAND</u>	<u>11</u>
<u>4. CUSTOMIZE ITEMS</u>	<u>12</u>
<u>5. CHECK/UNCHECK ITEMS</u>	<u>15</u>
<u>6. MOVE ITEMS</u>	<u>16</u>
<u>7. ADJUST COLUMN SIZE</u>	<u>17</u>
<u>8. SORT COLUMNS</u>	<u>17</u>
<u>9. DUPLICATE AND CALCULATE</u>	<u>18</u>
<u>10. GLOBAL SETTINGS</u>	<u>20</u>
<u>11. IMPORT AND EXPORT</u>	<u>21</u>
<u>12. NOTES</u>	<u>24</u>
<u>13. ALERTS ON ITEMS</u>	<u>25</u>

SUPERTREE END USER LICENSE AGREEMENT

IMPORTANT - READ CAREFULLY:

This End-User License Agreement is a legal agreement between you (either an individual or a single entity) and Corisoft Software for the software product identified above, which includes computer software and may include associated media, printed materials, and "online" or electronic documentation ("SOFTWARE PRODUCT").

By installing, copying, or otherwise using the SOFTWARE PRODUCT, you agree to be bound by the terms of this LICENSE AGREEMENT.

If you do not agree to the terms of this LICENSE AGREEMENT, do not install or use the SOFTWARE PRODUCT. Please do NOT order a registration key, if you do not agree to this license agreement.

License conditions

The SOFTWARE PRODUCT is protected by copyright laws and international copyright agreements, as well as other intellectual property laws and agreements. No part of the software or the manual may be multiplied, disseminated or processed in any way without the written consent of Corisoft Software. Violations of these conditions will be prosecuted in every case.

The use of the software is done at your own risk. The manufacturer and developer accepts no liability for any damages, either as direct or indirect consequence of the use or abuse of this product or software by the end-user. The SOFTWARE PRODUCT is being licensed and not sold.

All rights reserved. Software Copyright © 1997-2004 Corisoft Software.

SOFTWARE PRODUCT LICENSE

GRANT OF LICENSE. This LICENSE AGREEMENT grants you the following simple non-exclusive rights:

Applications Software

You may install and use one copy of the SOFTWARE PRODUCT, or any prior version for the same operating system, on a single computer.

The primary user of the computer on which the SOFTWARE PRODUCT is installed may make a second copy for his or her exclusive use.

Storage/Network Use

You may also store or install a copy of the SOFTWARE PRODUCT on a storage device, such as a network server, used only to install or run the SOFTWARE PRODUCT on your other computers over an internal network;

however, you must acquire and dedicate a license for each separate computer on which the SOFTWARE PRODUCT is installed or run from the storage device. A license for the SOFTWARE PRODUCT may not be shared or used concurrently on different computers.

OEM License

If you obtained this license agreement together with a hardware product, you are entitled to use this SOFTWARE PRODUCT as a part of the Hard and Software package according to this license agreement.

DESCRIPTION OF OTHER RIGHTS AND LIMITATIONS

SOFTWARE PRODUCT as Demo Version Even if the SOFTWARE PRODUCT is a demonstration version, it is protected by copyright laws and international copyright agreements, as well as other intellectual property laws and agreements.

Limitations on Reverse Engineering, Decompilation, and Disassembly

You may not reverse engineer, decompile, or disassemble the SOFTWARE PRODUCT, except and only to the extent that such activity is expressly permitted by applicable law notwithstanding this limitation. This also applies to Demo versions.

Separation of Components

The SOFTWARE PRODUCT is licensed as a single product. Its component parts may not be separated for use on more than one computer. This also applies to demo versions.

Rental

You may not rent, lease, or lend the SOFTWARE PRODUCT. This also applies to demo versions. Software Transfer You may not transfer the rights of this end-user LICENSE AGREEMENT.

Data Transmission

You may not transmit the SOFTWARE PRODUCT, or parts of it, without the prior permission of Corisoft Software.

Termination

The license to use the SOFTWARE PRODUCT ends at the 31st of December, 2050. Without prejudice to any other rights (civil or criminal), Corisoft Software may terminate this LICENSE AGREEMENT if you fail to comply with the terms and conditions of this LICENSE AGREEMENT. In such an event, you must destroy all copies of the SOFTWARE PRODUCT and all of its components.

Upgrades

If the SOFTWARE PRODUCT is labeled as an upgrade, you must be properly licensed to use the SOFTWARE PRODUCT identified by Corisoft Software as being eligible for the upgrade in order to use the SOFTWARE PRODUCT.

A SOFTWARE PRODUCT labeled as an upgrade replaces and/or supplements the product that forms the basis for your eligibility for the upgrade. You may use the resulting upgraded product only in accordance with the terms of this LICENSE AGREEMENT.

If the SOFTWARE PRODUCT is an upgrade of a component of a package of software programs that you licensed as a single product, the SOFTWARE PRODUCT may be used and transferred only as part of that single product package and may not be separated for use on more than one computer.

SuperTree

Introduction

SuperTree is a hierarchical database organized around a treeview. Users can define their own structure in order to store their data. SuperTree is highly customizable, fast and useful.

Build your database structure with different kind of fields. Manage items and indent them as you want. You can set foreground and background colors, or change the font style of each item in the tree view.

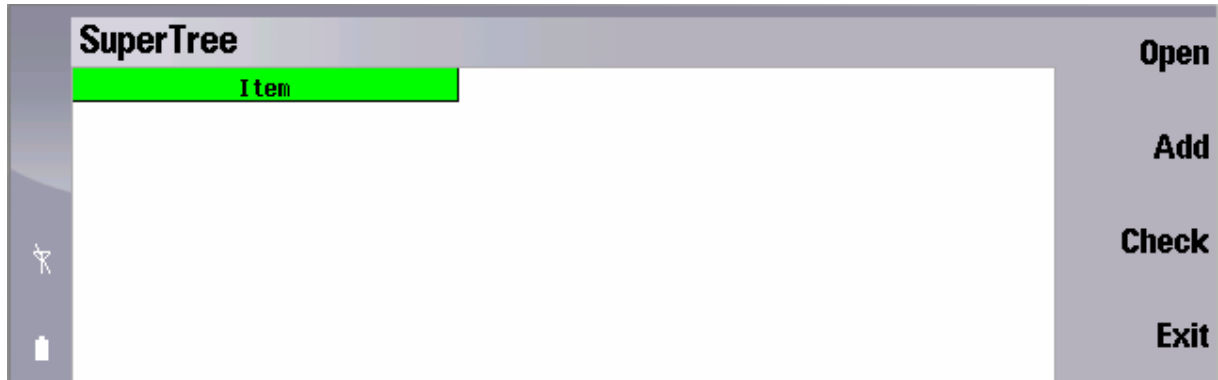
Define specific templates in order to import or export data to CSV files.

SuperTree is a file-based application, users can manage more than one file at the same time.

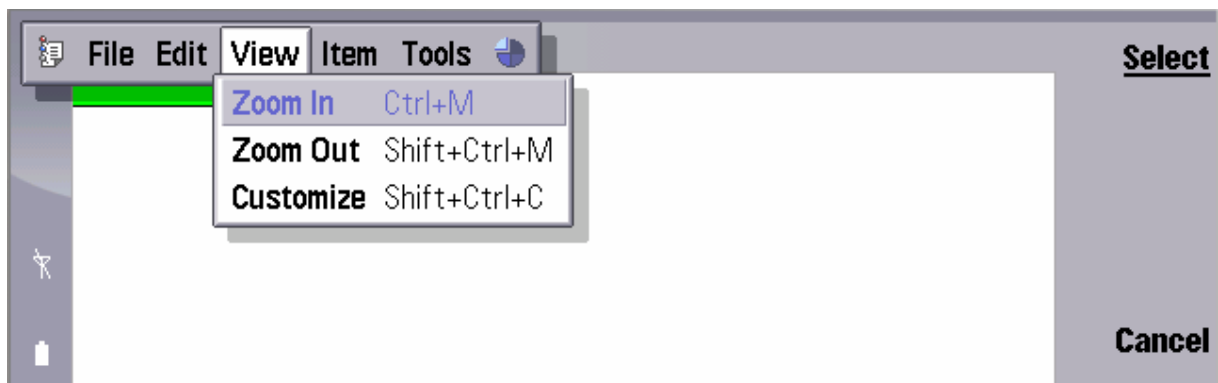
Unregistered version of the software allows users to manage 10 items max.

1. Manage database structure

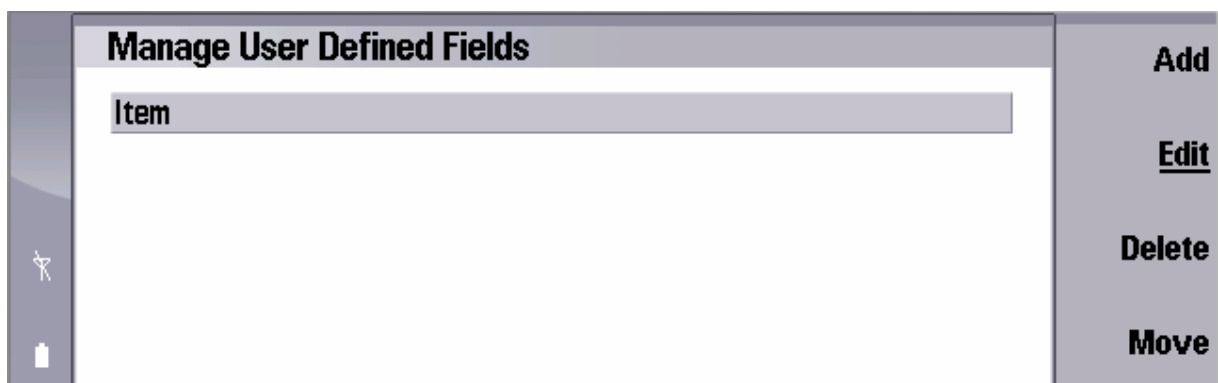
When you start SuperTree, the default database contains only one user field called “**item**”. This field is a text type field.



In order to add new fields or modify some existing fields, you must open the menu and select “**Customize**” item menu.



The dialog box allows users to manage database fields.



You can now Add, Edit, Delete or Move fields in your database.

In order to close this dialog box, you must press the “ESC” key.

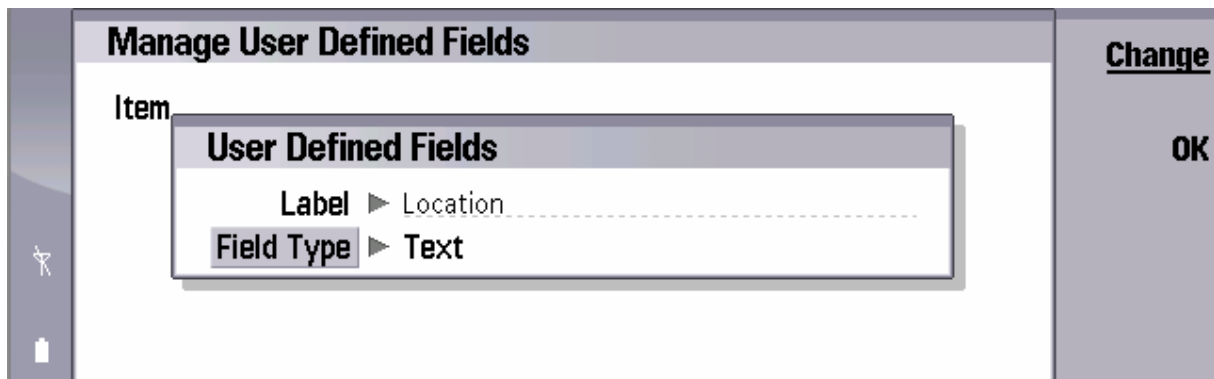
We will now create a new database for example a “shopping list”.

Let’s add these new columns (date, location, quantity, price, to buy).

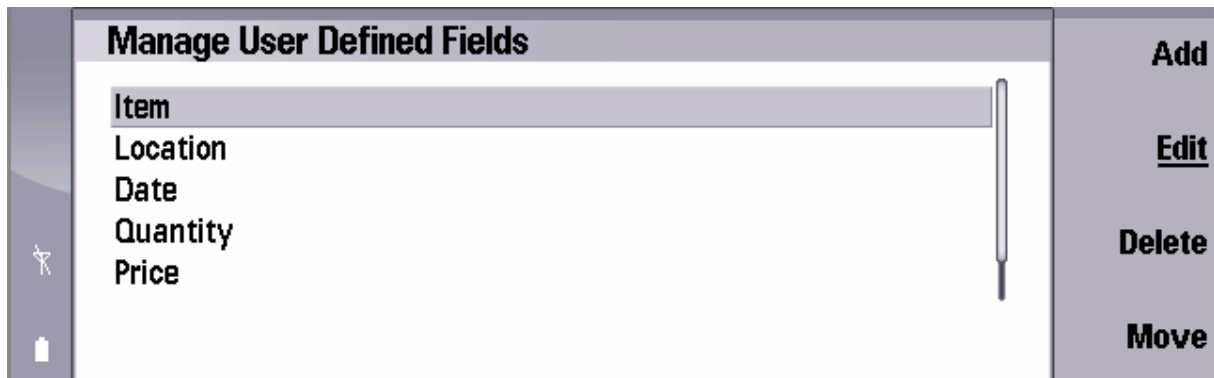
Location will be a text, quantity an integer value, price a float, to buy a yes/no statement.

Actually, SuperTree allows 5 field formats : DATE, TEXT, INTEGER, FLOAT, YES/NO flag

In the example, pressing the “Add” button open this new dialog box :

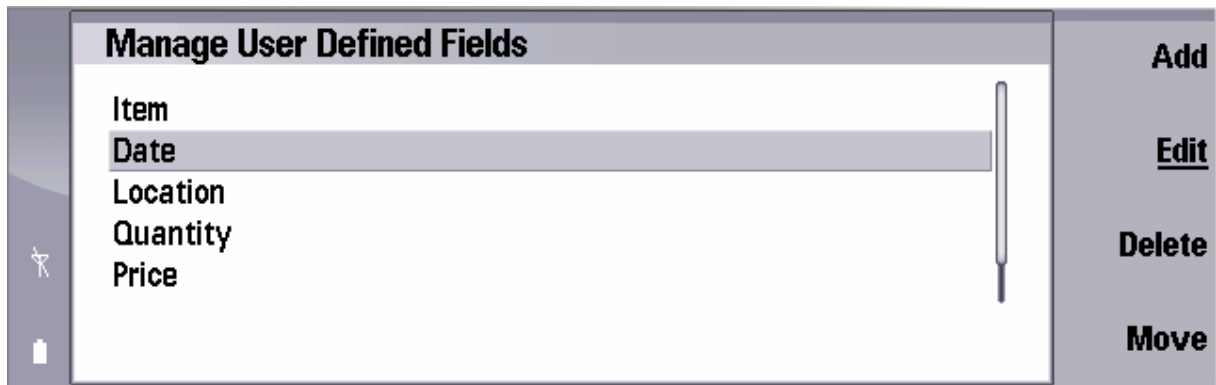


Create all needed fields then the dialog box will look like this :



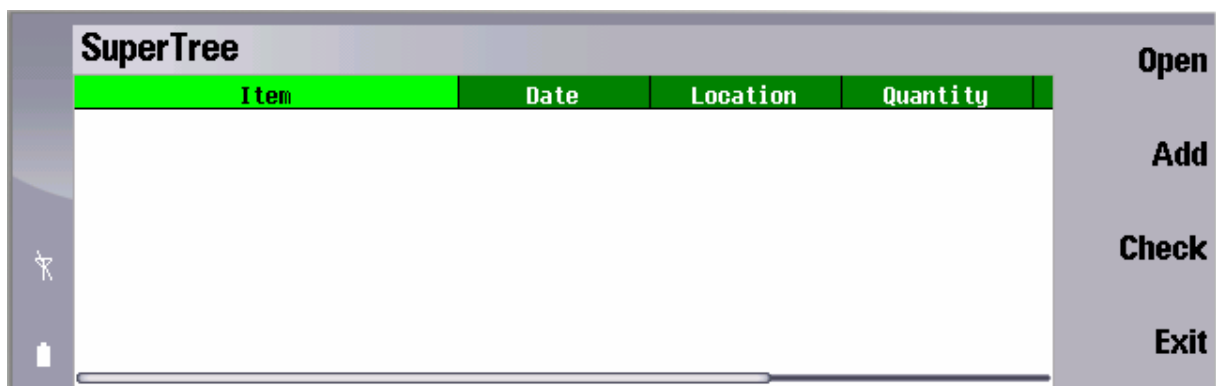
We can now try to move some fields in order display them a specific order.

Select ‘Location’ and press “Move” button.



Location has moved from one position down.

We can now press the “**ESC**” key to come back to the main list.



This is our new list.

2. Add, Edit and Delete records

Press the “**Add**” button to add record in the database.

Item	▶ Nokia 9500	Cancel OK Clear
Date	▶ 09/02/2005	
Location	▶ London	
Quantity	▶ 2	
Price	▶ 780	
To Buy	▶ Yes	

This form is a scrollable form which takes in account all user defined fields dynamically.

The ‘**Clear**’ button resets all fields in the form.

Press “**OK**”, to validate the new entry.

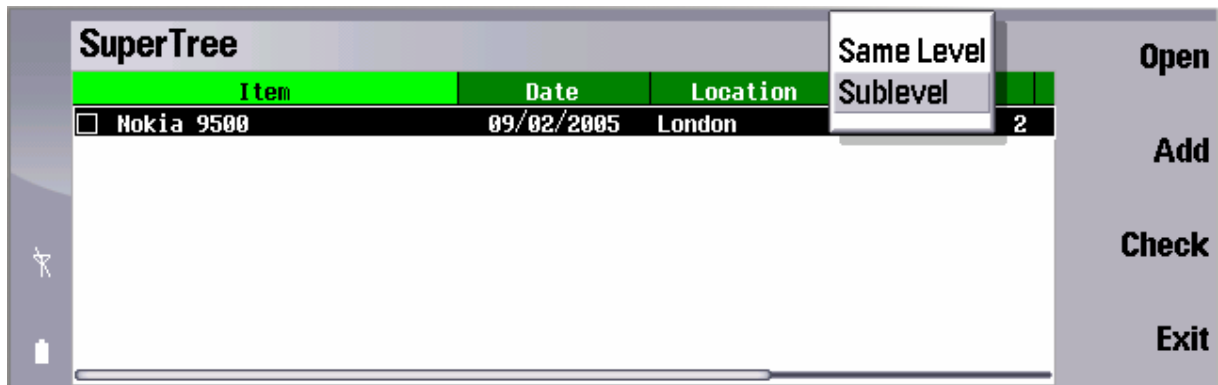
SuperTree				Open Add Check Exit
Item	Date	Location	Quantity	
<input type="checkbox"/> Nokia 9500	09/02/2005	London	2	

The tree view contains now a new record.

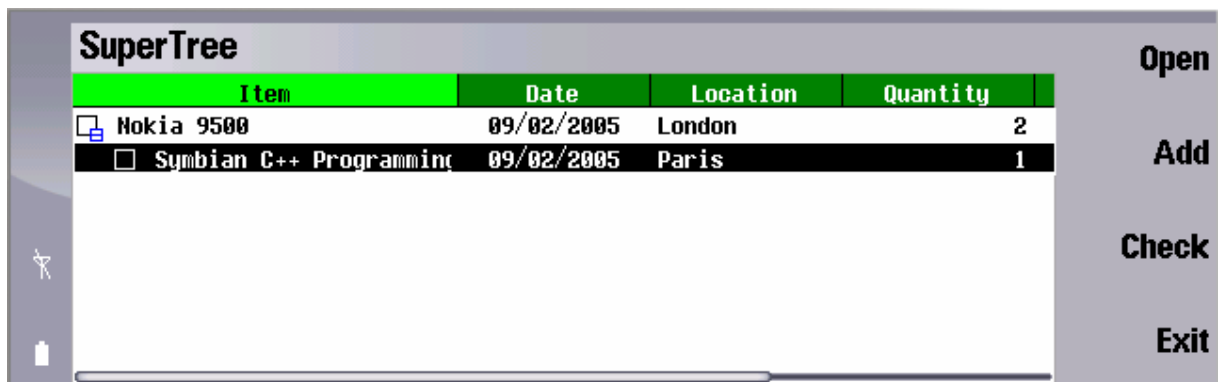
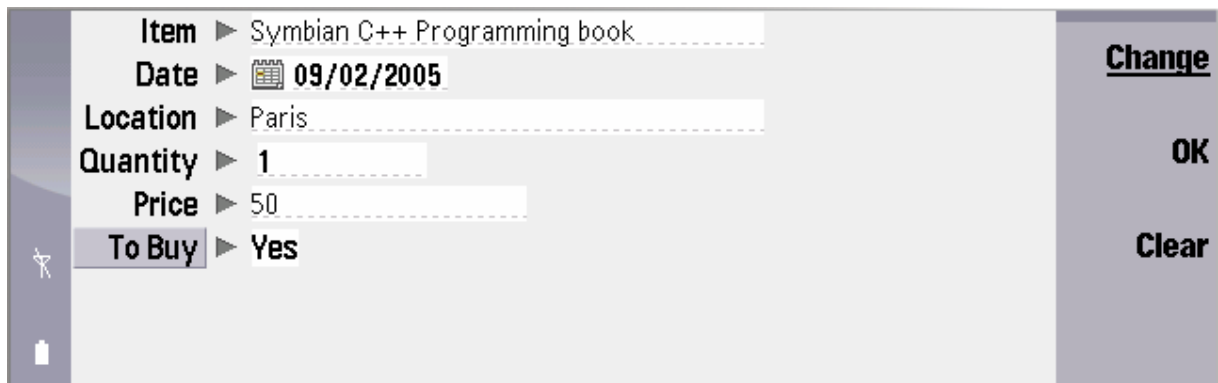
To edit a record, select it then press “**Enter**” key.

You can also delete a record in pressing “**Backspace**” Key.

If you press now “**Add**” again, then Supertree will suggest 2 options : Add an item at the same level as the selected item or add a sublevel item.



We can try to add a sublevel Item.



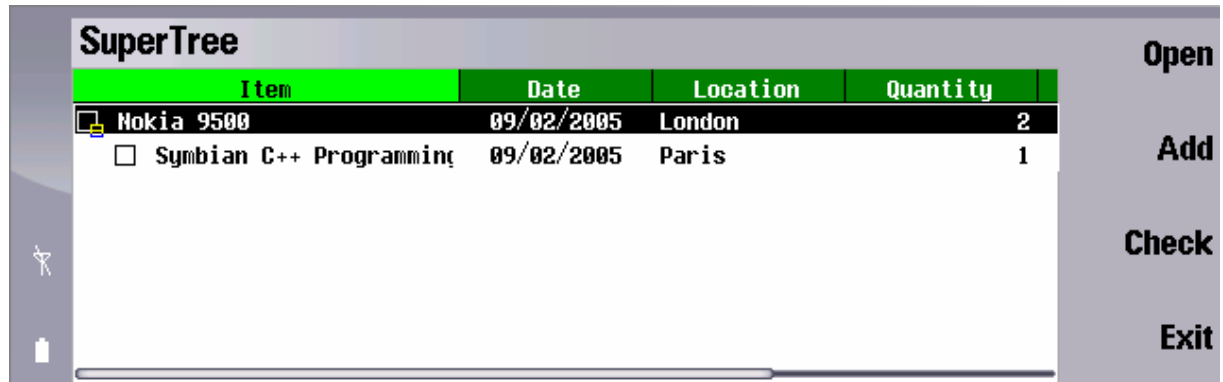
As you can see, this item has been indented.

The icon of the previous item has changed and shows now a small child indicator.

3. Collapse and Expand

SuperTree allows collapsing and expanding features on items in the list.

First, you must select an item, for example we can select the first row :



Collapse and Expand are executed when pressing the “**TAB**” button.

Press “**TAB**” on an open item will automatically collapse it. Press “**TAB**” on a collapsed item will automatically expand it at the first sublevel.



The current state of each item in the list is stored in the database when saving.

4. Customize items

Each item in the list can be customized with specific colors and font style. SuperTree allows 16 colors max.

Here are the color code values :

- Black = 0
- Dark Gray = 1
- Dark Red = 2
- Dark Green = 3
- Dark Yellow = 4;
- Dark Blue = 5
- Dark Magenta = 6
- Dark Cyan = 7
- Red = 8
- Green = 9
- Yellow = 10
- Blue = 11
- Magenta =12
- Cyan = 13
- Gray =14
- White =15

Font styles can be normal, bold, italic and bold-italic.

Here are the style code values :

- Normal = 0
- Bold = 1
- Italic = 2
- Bold-Italic = 3

Select an item and press the “Color/Style” menu item

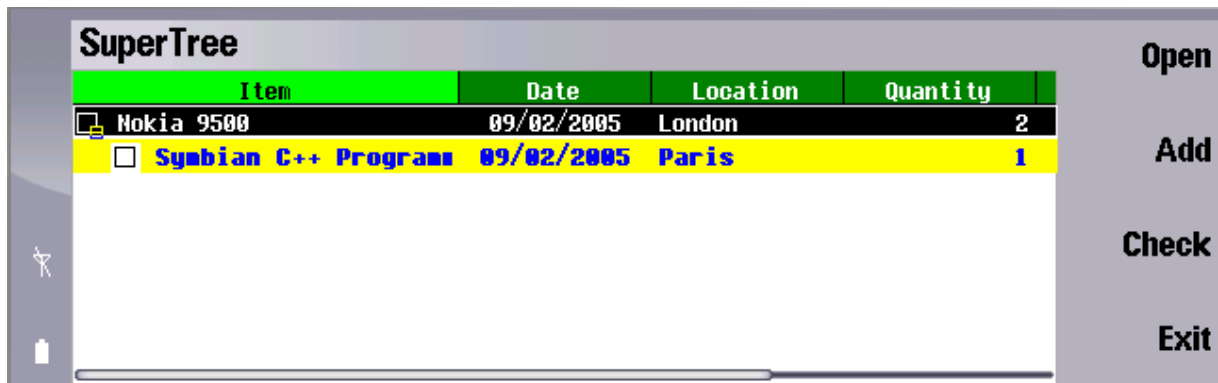


SuperTree will open the dialog box below.



Now we select a blue foreground color, a yellow background color and a bold style font for this item.

Here is the new display.

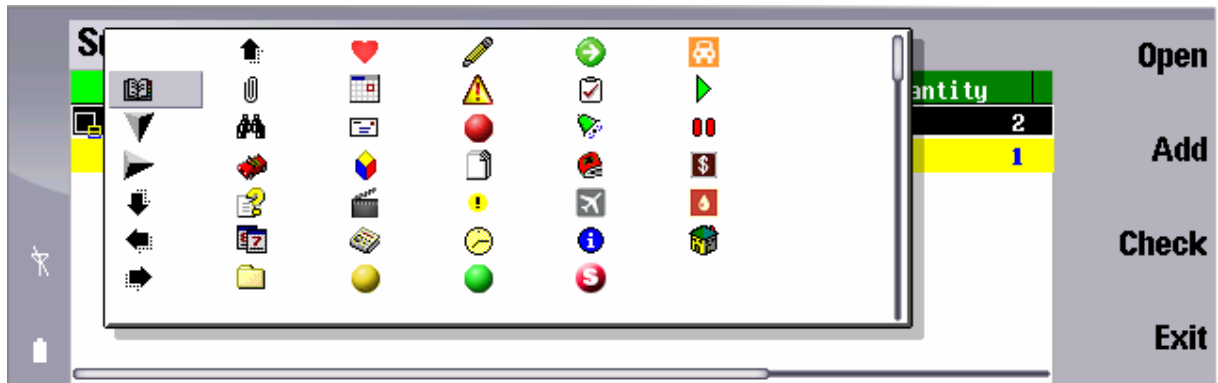
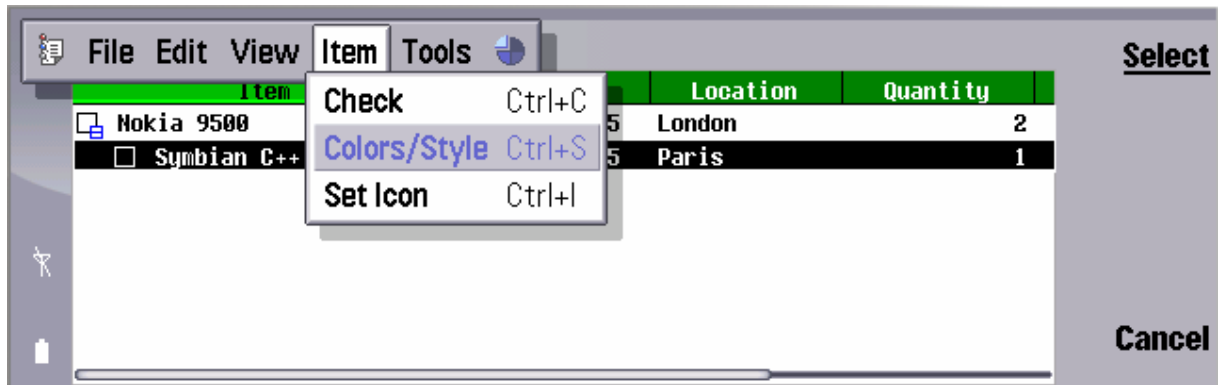


You can customize each item in the list this way. You can also select more than one item and apply the same color/style on this selection.

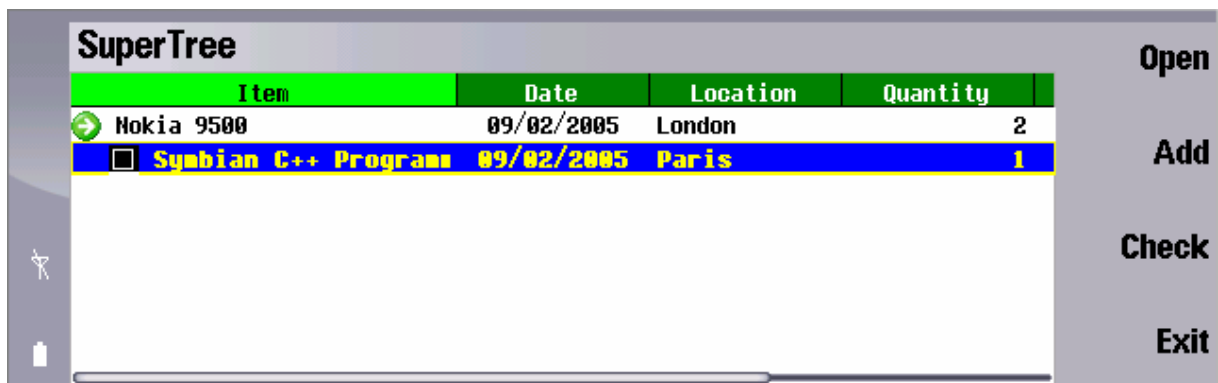
The default icon for an item is a checkbox which can change from checked to unchecked.

Users can also assign user-defined icons for each item.

Open the main menu and press "**Select Icon**" item menu.



Select an icon and press “Enter” key.



The first line shows now a new icon for the first item in the list.

5. Check/Uncheck items

Let's add more items in the list in order to manage checking item feature.

Here is our new list :

SuperTree				Open
Item	Date	Location	Quantity	
<input type="checkbox"/> Symbian C++ Program	09/02/2005	Paris	1	
<input checked="" type="checkbox"/> My new PC	09/02/2005	Office	1	Add
<input type="checkbox"/> Video Card	09/02/2005		1	
<input checked="" type="checkbox"/> HDD	09/02/2005		1	Check
<input type="checkbox"/> Disk 1	09/02/2005		1	
<input type="checkbox"/> Memory	09/02/2005		1	
<input type="checkbox"/> My New car	09/02/2005	Home	1	Exit

SuperTree allows an autocheck feature. With the autocheck feature SuperTree will automatically update parent item when all its subitems are checked. This process is executed recursively on the treeview.

By default SuperTree is configured with autochecking feature positioned to true. This can be changed in the global settings of the file.

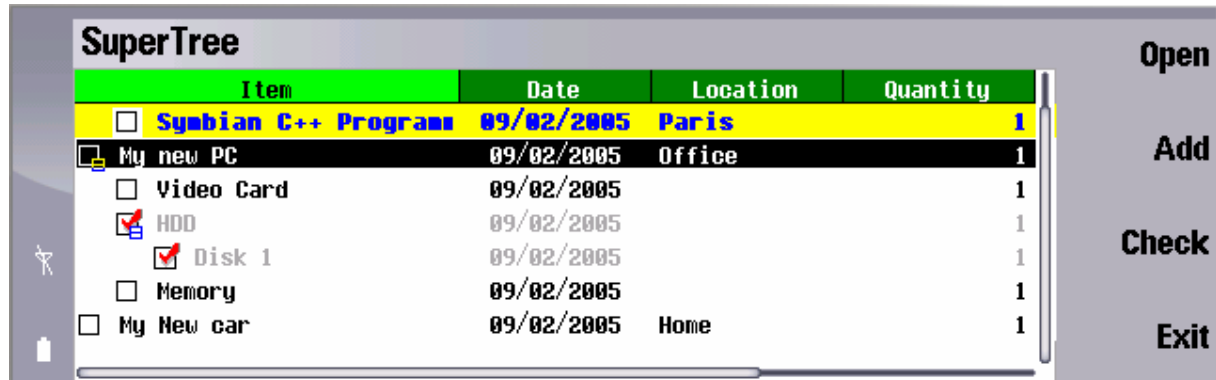
Let's try to check the item "disk1".

SuperTree				Open
Item	Date	Location	Quantity	
<input type="checkbox"/> Symbian C++ Program	09/02/2005	Paris	1	
<input checked="" type="checkbox"/> My new PC	09/02/2005	Office	1	Add
<input type="checkbox"/> Video Card	09/02/2005		1	
<input checked="" type="checkbox"/> HDD	09/02/2005		1	Check
<input checked="" type="checkbox"/> Disk 1	09/02/2005		1	
<input type="checkbox"/> Memory	09/02/2005		1	
<input type="checkbox"/> My New car	09/02/2005	Home	1	Exit

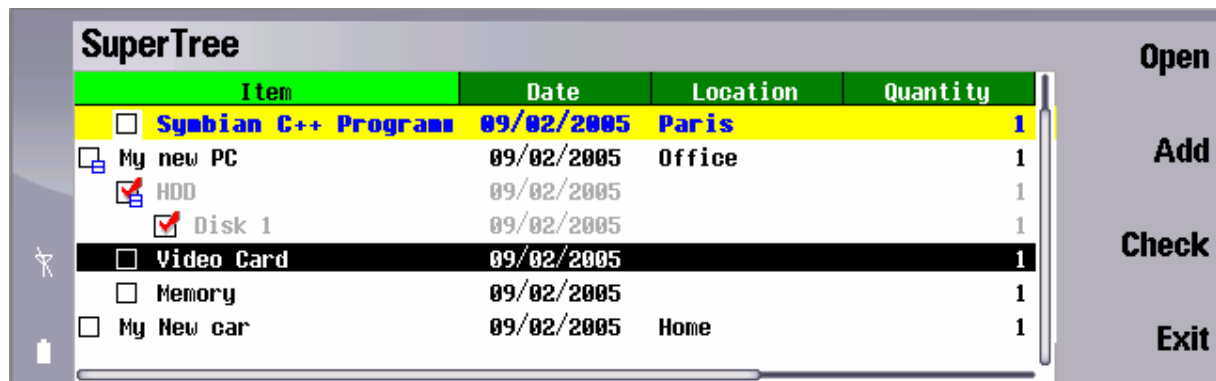
Checked items are now changed from color to gray. Parent item has been set automatically to a checked state.

6. Move items

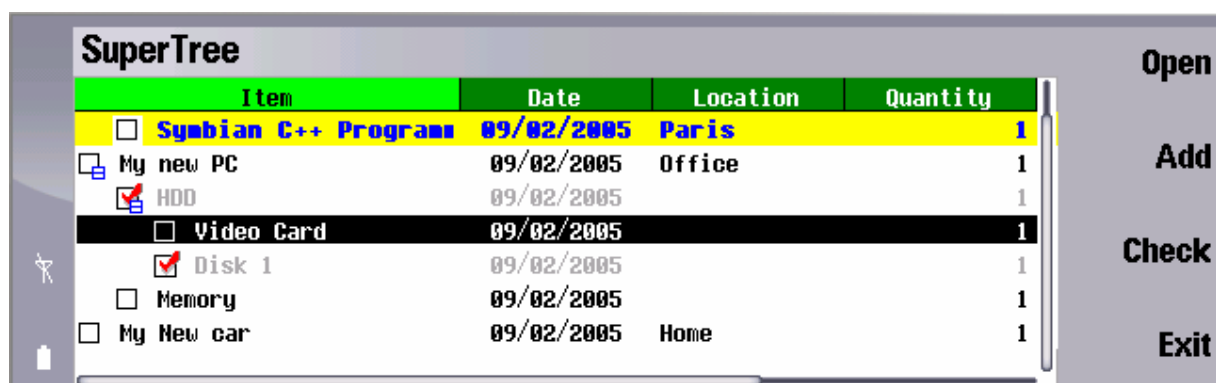
SuperTree allows moving items in the tree. In order to do that, users must press “CTRL” + “Arrows” key.



We can move “Video Card” item down in selecting it and in pressing CTRL+DOWN.



We can also move “Video Card” item to the right in pressing CTRL+RIGHT.



Be aware when users move item, check states are not automatically updated even if autocheck option has been selected.

7. Adjust column size

Users can adjust column size with a combination of **SHIFT+CONTROL+LEFT/RIGHT** keys.

The active column is the green one, you can move between columns with the **SHIFT+RIGHT/LEFT** keys.

You must first select the active column then resize it.

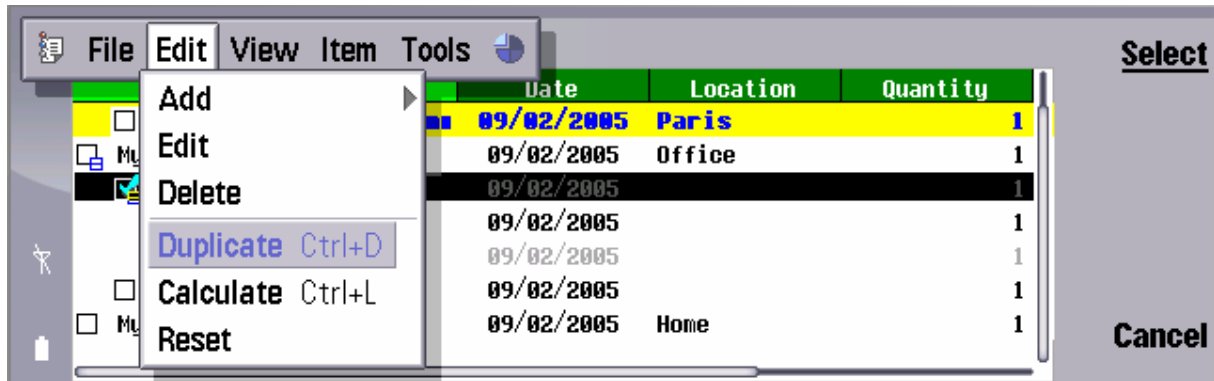
8. Sort columns

Users can sort data according to the active column.

You can sort data in ascending order in pressing **SHIFT+CONTROL+DOWN** key or descending with **SHIFT+CONTROL+UP** key

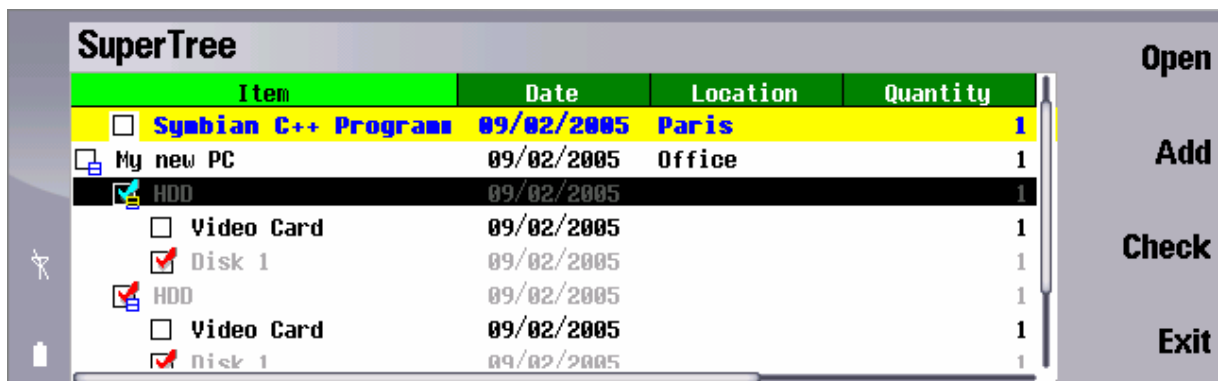
9. Duplicate and Calculate

You can duplicate items in selecting an item then press “Duplicate” item menu.



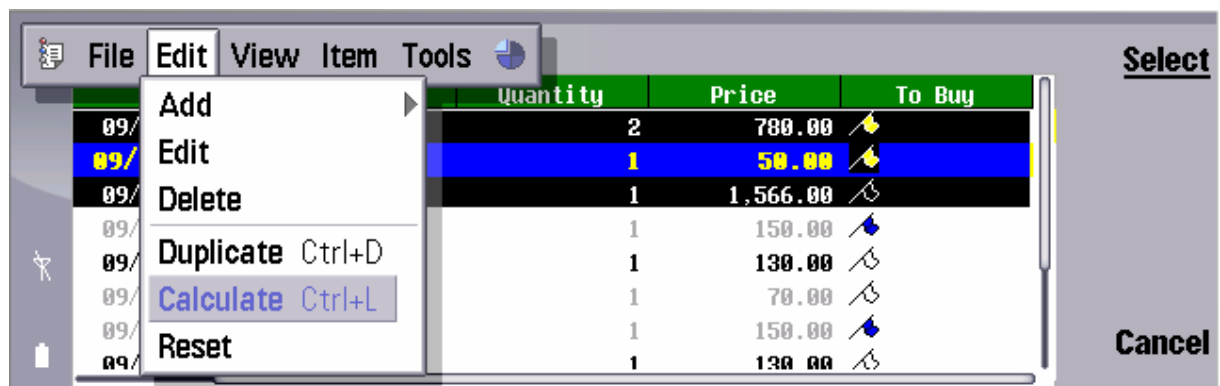
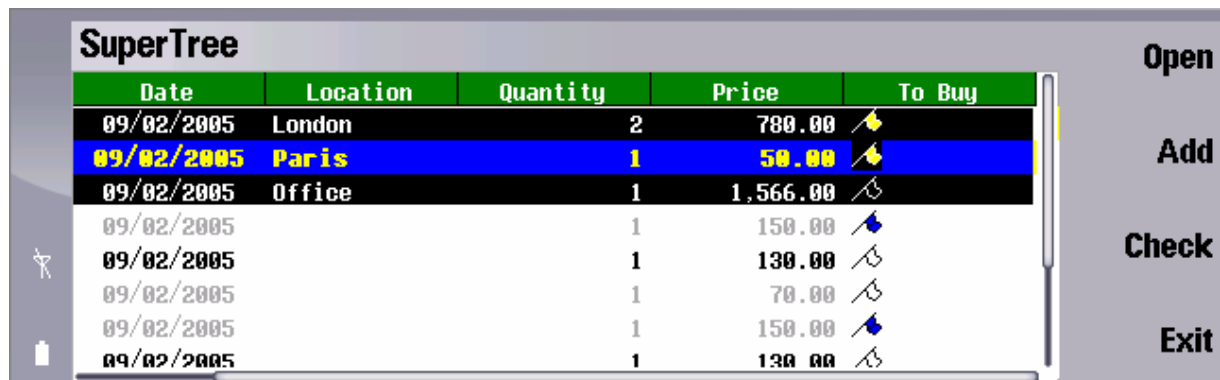
SuperTree takes in account the entire subtree associated to the current item.

For example “HDD” item.



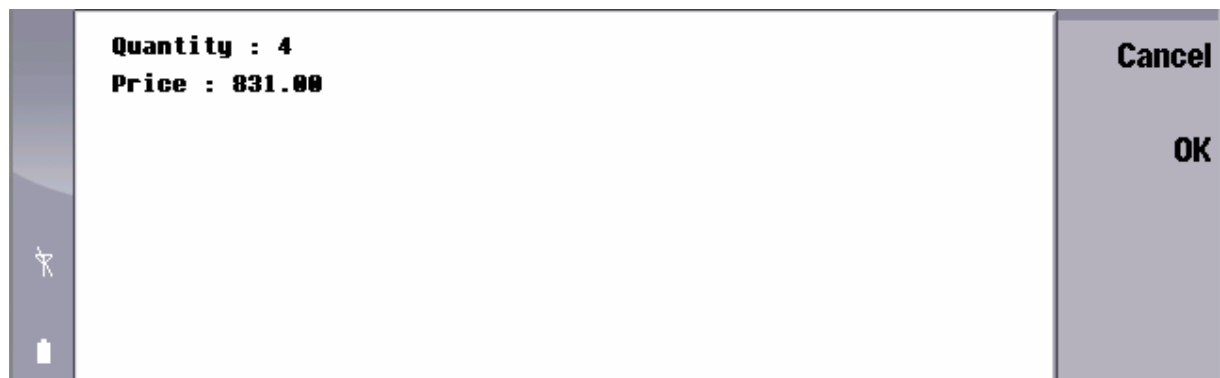
The calculation brings user some help to sum items between them.

You just have to select some item in the list then press “Calculate” item menu



If you have selected more than one item then calculation will be done on the selection, if not the calculation will be processed on all items.

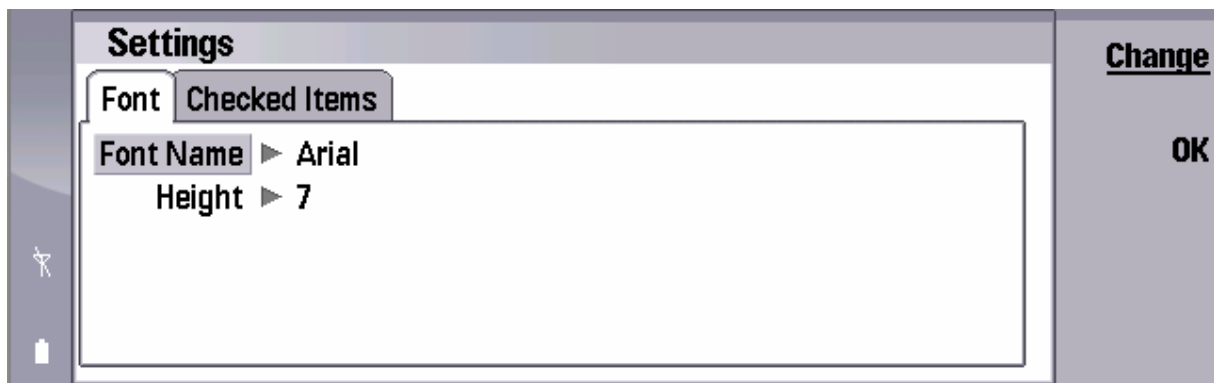
Press “OK” then the result is display in a note dialog box :



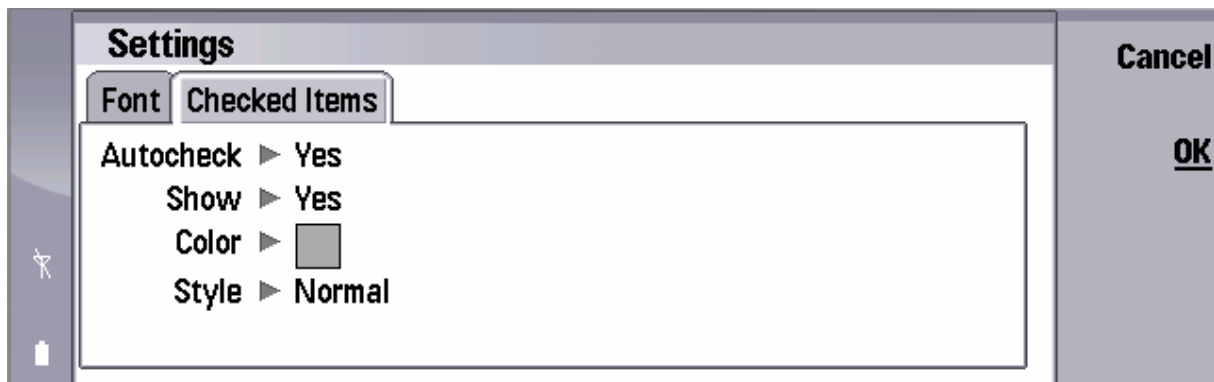
10. Global Settings

Each SuperTree file can manage its own level of customization.

Users must open the main menu and select “**Settings**”.



Select the default font for the list.



Manage checked item.

Users can set specific color and style for checked items. You can also enable or disable autocheck feature here.

SuperTree allows mask checked item if necessary.

11. Import and Export

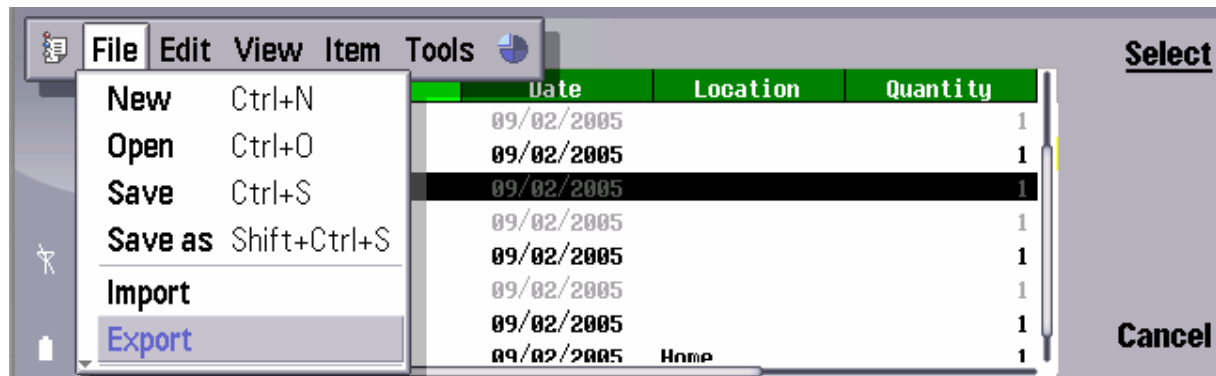
Users can export or import data directly to or from text files. Text files are CSV file formats and can be only **ANSI files**.

In order to facilitate this import or export of data, SuperTree proposes a template management system.

Users can store their preferences in templates then select them each time they want to do an export or an import of data.

The template stores the fields to export or import and their order. Also users can define the separator and a name for the template.

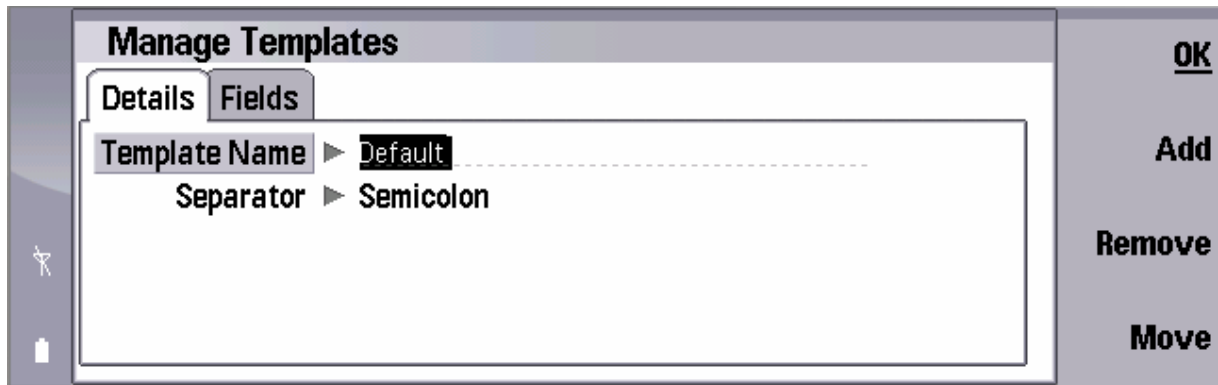
Open the main menu then press “**EXPORT**”.



By default there is always one template defined.

Users can define their own templates in pressing “**Add**” button.

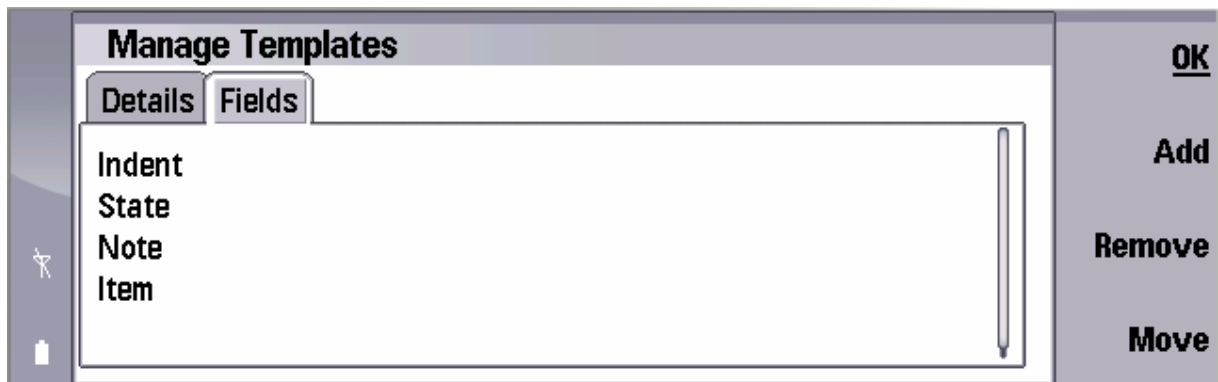
This template contains fields ?, press “**Edit**”.



Users can define the name of the template and the separator at this level.

There are 3 kind of separators : tab, comma and semicolon characters

Press “**Fields**” tab.

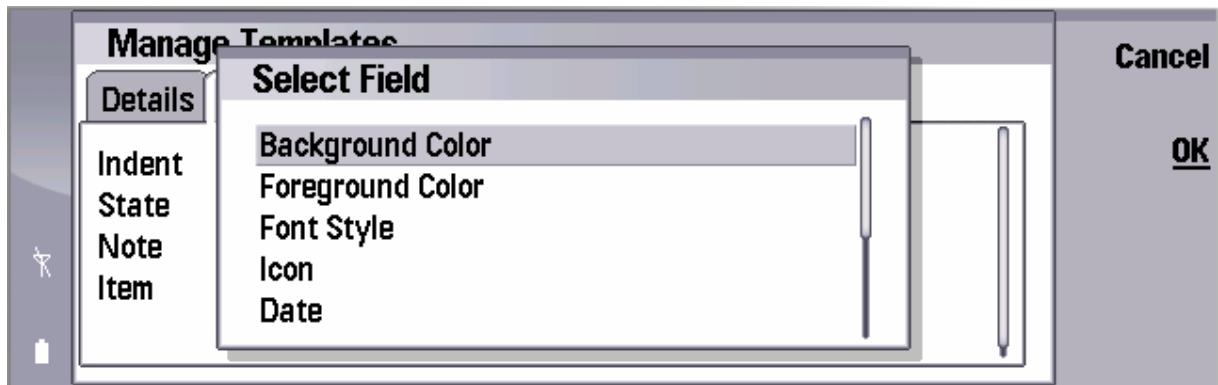


There are 4 fields :

- **Indent** : indentation as integer (0 for root)
- **State** : Checked (1) or unchecked (0)
- **Note** : associated note. A note might contain some CRLF characters then this field is encapsulated with “” characters.
- **Item** : one of user-defined fields.

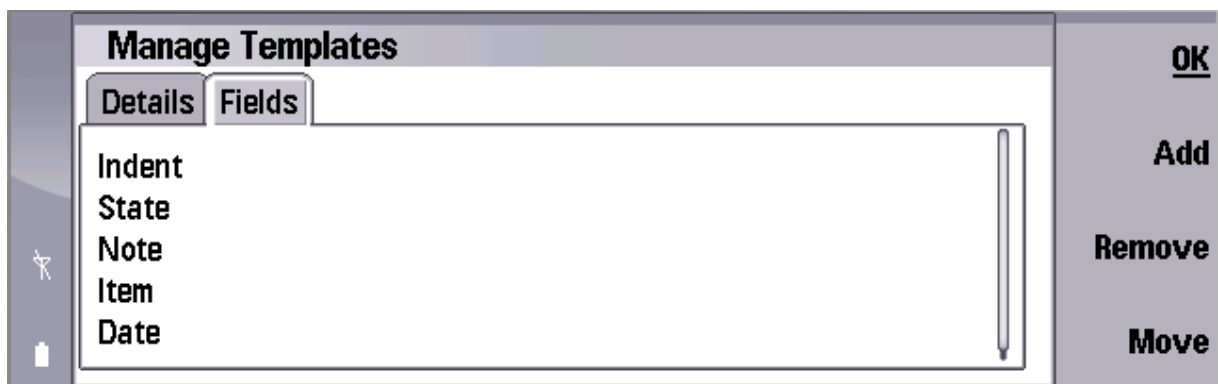
Users can also Add or Remove fields.

Press “**Add**”



The fields which are not already selected are proposed in a list.

Users can select a field and add it to previous list. Let's go with "**Date**" field.



The new field "Date" has been now added to the list.

You can also move the fields in order to reorganize the order of fields in the target file with "**Move**" button.

12. Notes

Users can associate a note for each item.

In order to open the note view, you must press "SPACE" button.

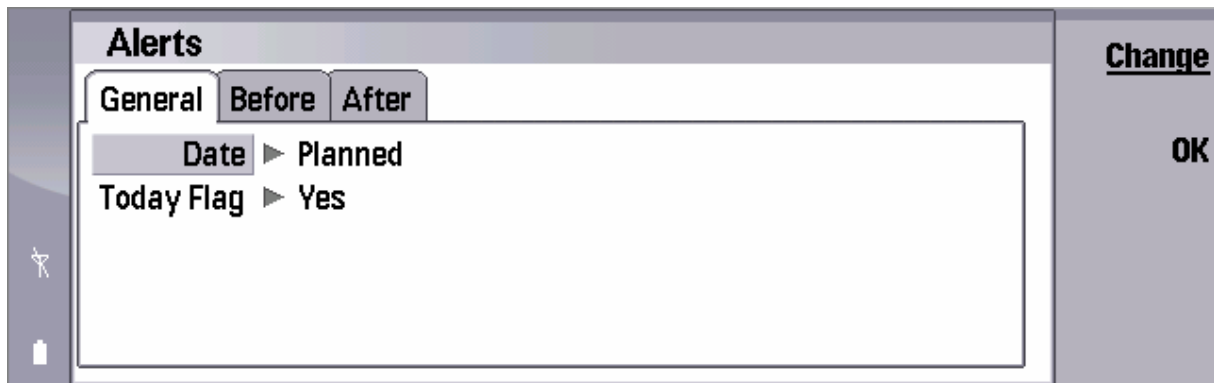
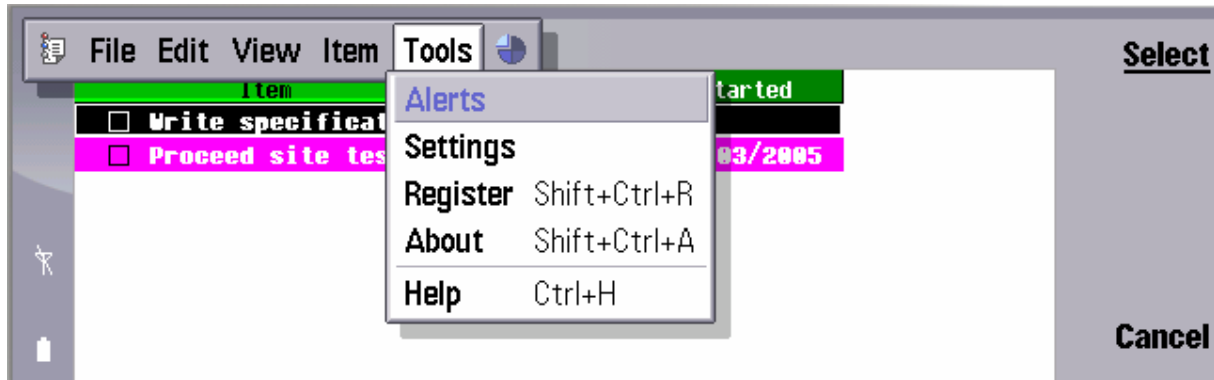
These notes are stored in the database.



13. Alerts on items

Users can set alerts on items. These alerts are visual with an indicator and color changes.

Alerts can be set only on a date field.



Select the Date field in this case the field is "Planned".

Today Flag is just a small icon displayed on the left of the screen that indicates the selected date field contains the current date.



This setting changes the color font of an item if the date field "Planned" is 5 days before today and the item hasn't been checked.



This setting changes the color font of an item if the date field "Planned" is in the past and the item hasn't been checked.

>>> END OF DOCUMENT <<<