

Extended Printers

for
Nokia 9210/9290 Communicator

PSI NT (PSILoc)

<http://www.psiloc.com/>

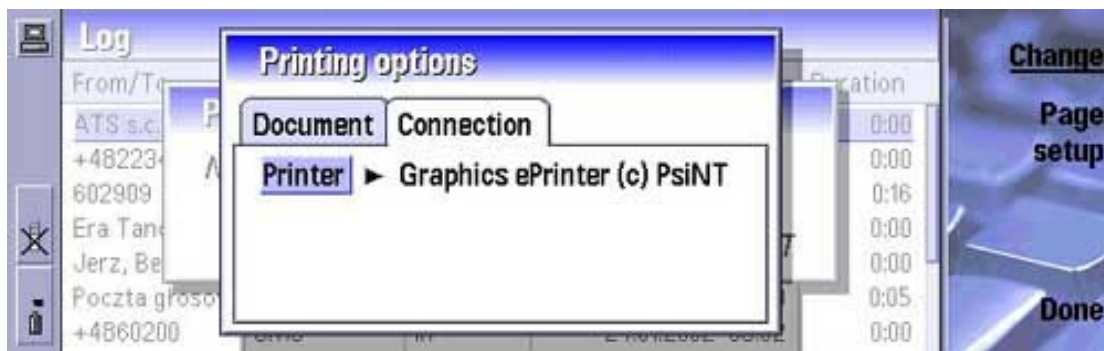
Application Guide

Introduction

Now you don't need any special IrDA printer to take advantage of your N9210's printing capabilities! Extended Printers is a set of **printer drivers** which enable **printing to a file**. The file can then be easily printed on PC using your standard computer printer.

One can print to both **text** and **graphic** file. There is also an option to print directly to **clipboard**, which makes it possible to paste the printed content directly in any Communicator application (e.g. Word or Sheet) and also to quickly paste the text in any **Windows** application via **CopyAnywhere** application.

Graphic driver



Graphic driver allows printing to a graphic file – either **MBM** or **JPEG**. This method provides a formatted output ready for printing and can be used when you don't need to make any modifications.

One can choose the **quality**, number of **colors** and **file name** and **location** of the destination graphics file:

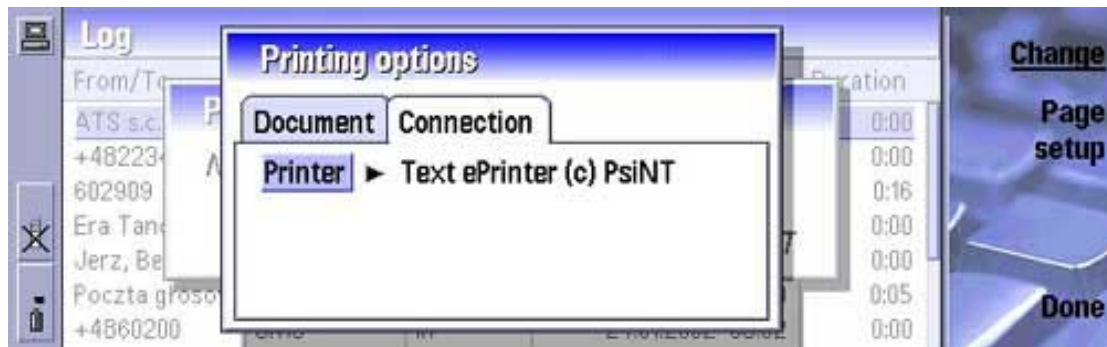


Following screenshot shows **Call Log** printed out to a graphic file:

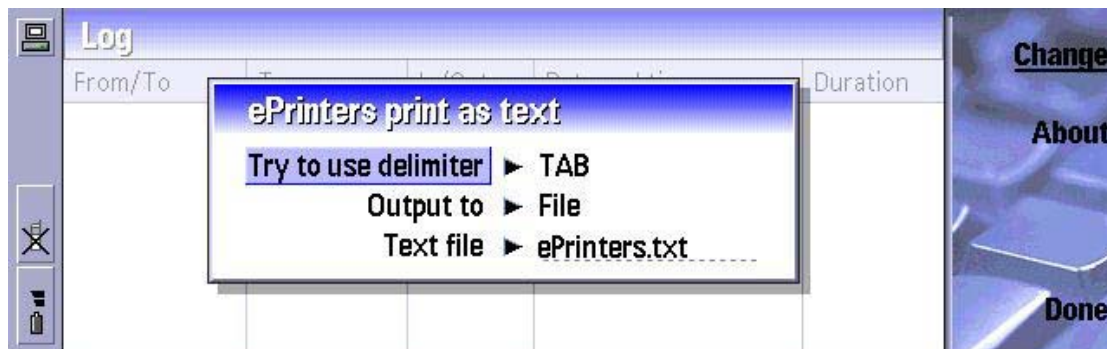
From/To	Type	In/Out	Date and time	Duration	Subject	Status
ATS s.c.	call	out	24.01.2002 20:29	0:00		
+482234554	call	out	24.01.2002 20:12	0:00		
602909	call	out	24.01.2002 20:08	0:16		
Era Tandem	call	out	24.01.2002 20:07	0:00		
Jerz, Beata	call	out	24.01.2002 20:00	0:00		
Poczta głosowa	call	out	24.01.2002 20:00	0:05		
+4860200	SMS	in	24.01.2002 03:02	0:00	This is a test messa...	
Era Tandem	call	out	24.01.2002 03:01	0:00		
Jerz, Beata	call	out	23.01.2002 20:41	0:00		
602900	call	out	23.01.2002 20:40	0:05		
602901	call	out	23.01.2002 20:40	0:06		

Text driver

Text driver can be used when you need to make modifications the “printed” content, edit it or include it (paste) into other document. Text driver stores its output in a plain text file, which can be handled as any other ASCII file.

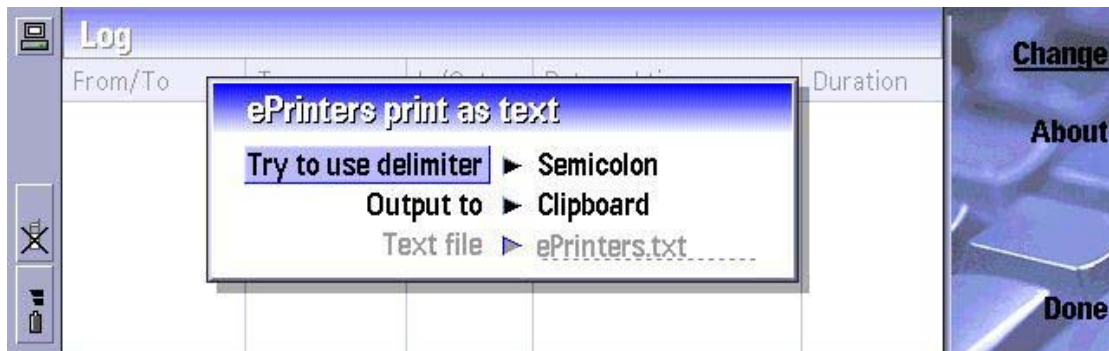


Text driver generates a text file with the **name** and in **location** selected by the user. One can also select the **delimiter** (Tab, comma, colon, semicolon) to be used if the printed contents are in a table etc.



Printing to clipboard

Text driver also lets you print directly to **clipboard**. This method can be used if you want to paste your print out directly into some other document in Communicator (Word, Sheet etc) or on PC. If you have **CopyAnywhere** enabled on your PC, just press **Ctrl-V** to paste the Communicator clipboard contents into any Windows application like **Notepad**, **Word** etc.



Reviews

Review of Extended Printers application can be found at following Web site:

My-Communicator.com

Purchasing & Contact Information

The latest version of Extended Printers can be obtained at:

<http://www.psiloc.com>

<http://My-Communicator.com>

Should you have any questions or comments, please write to:

info@psiloc.com