



# NOKIA 9210i Communicator



## Add-on Applications Guide

*Electronic user's guide released subject to "Nokia User's Guides Terms and Conditions, 7th June, 1998"*

Copyright © 2000-2003 Nokia. All rights reserved.

Reproduction, transfer, distribution or storage of part or all of the contents in this document in any form without the prior written permission of Nokia is prohibited.

Nokia, Nokia Connecting People, Bounce and Triple Pop are trademarks or registered trademarks of Nokia Corporation. Nokia tune is a sound mark of Nokia Corporation. Other product and company names mentioned herein may be trademarks or tradenames of their respective owners.

Nokia operates a policy of continuous development. Nokia reserves the right to make changes and improvements to any of the products described in this document without prior notice.

Under no circumstances shall Nokia be responsible for any loss of data or income or any special, incidental, consequential or indirect damages howsoever caused.

The contents of this document are provided "as is". Except as required by applicable law, no warranties of any kind, either express or implied, including, but not limited to, the implied warranties of merchantability and fitness for a particular purpose, are made in relation to the accuracy, reliability or contents of this document. Nokia reserves the right to revise this document or withdraw it at any time without prior notice

The availability of particular products may vary by region. Please check with the Nokia dealer nearest to you.

**Please refer to the user guide of the product for instructions on operation, care and maintenance, including important safety information.**

# Contents

|  |          |
|--|----------|
| <b>Add-on applications .....</b>                   | <b>1</b> |
| RSA Secur ID for the Nokia 9210 Communicator ..... | 2        |
| Code Vault .....                                   | 3        |
| Citrix ICA .....                                   | 4        |
| F-Secure Anti-Virus.....                           | 5        |
| F-Secure FileCrypto.....                           | 6        |
| F-Secure SSH .....                                 | 7        |
| Backup .....                                       | 8        |
| Tarantella Enterprise 3 .....                      | 9        |
| M.I.T. Remapper.....                               | 10       |
| Remote Control for Nokia 9210i .....               | 11       |
| ZIP-manager.....                                   | 12       |
| RealOne Player.....                                | 13       |
| Flash Player.....                                  | 14       |
| Mobile Evidence-Based Medicine Guidelines.....     | 15       |
| TomTom CityMaps .....                              | 16       |
| TomTom RoutePlanner .....                          | 17       |
| Plan6.....   | 18       |
| Mobile Sales Assistant .....                       | 19       |

|   |    |
|---|----|
| Pocket Folio.....                         | 20 |
| ElbRUS 9210.....                          | 21 |
| AAC Mobile Dictionary.....                | 22 |
| M.I.T. Dictionary.....                    | 23 |
| Pro'Lingua Translator.....                | 24 |
| Ozicom Hebrew.....                        | 25 |
| PDF+.....                                 | 26 |
| Irma - the Infrared Mobile Accessory..... | 27 |
| Checkers.....                             | 28 |
| Chess.....                                | 29 |
| Gadget Golf.....                          | 30 |
| Reversi.....                              | 31 |
| Torpedo.....                              | 32 |

# 1. Add-on applications

This guide provides you with introductory information on applications available for Nokia 9210i Communicator that have passed the certification process defined by Nokia.

All applications introduced in this guide have gone through the Nokia OK program dedicated to Nokia 9210i Communicator 3rd party software applications.

The Nokia OK program includes software testing by an independent testing house.

After the software application has passed the testing it will be digitally signed. This means that the Nokia 9210i Communicator will then indicate that the source of the installed application is known.

● **Note:** If the installation file does not contain a digital signature by Nokia, The user will be asked if he wants to install the application at his own risk.

If you are installing software that has passed Nokia OK program, you can be sure about the origin and quality of the software in question.

■ **Tip:** Information about available add-on applications for the Nokia 9210i Communicator can also be found from the Nokia Software Market at [www.softwaremarket.nokia.com](http://www.softwaremarket.nokia.com)

■ **Tip:** For up-to-date information on software approved by Nokia, visit [www.nokia.com/mobilecity/index.html](http://www.nokia.com/mobilecity/index.html)

See [www.softwaremarket.nokia.com](http://www.softwaremarket.nokia.com) for more applications.

## RSA Secur ID for the Nokia 9210 Communicator

### Contact information:

RSA Security  
RSA House  
Western Road  
Bracknell  
Berkshire RG12 1RT  
UK

E-mail:  
euro.info@rsasecurity.com  
www.rsasecurity.com  
Tel: +44 1344 781 000  
Fax: +44 1344 781 004

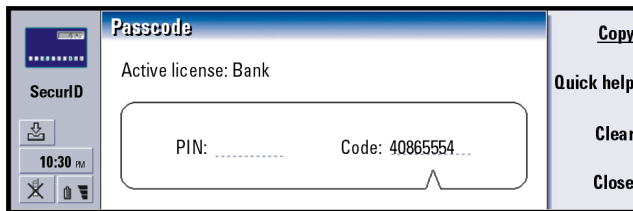


Figure 1

RSA Secur ID for the Nokia 9210 Communicator is a two-factor authentication solution that enables you to access networks and web sites securely.

The authentication is based on something you know (a password or PIN), and something you have (an RSA SecurID authenticator). The authenticator generates a unique, unpredictable passcode every sixty seconds. This combination of user PIN and current authenticator code is valid only for your personal use at the moment when your user authentication is required.

RSA Secur ID and the instructions for use are available in the Nokia 9210i Communicator sales package CD-ROM.

See [www.softwaremarket.nokia.com](http://www.softwaremarket.nokia.com) for more applications.

# Code Vault



Figure 2

Code Vault is a program for managing information securely in one place.

With Code Vault, you can store sensitive information such as passwords, credit card numbers and online shopping accounts, and keep it secure in one password-protected, encrypted database.

## Contact information:

Paragon Software GmbH  
 Pearl Str. 1  
 D-79426 Buggingen  
 Germany

E-mail:

info@epocware.com  
 www.epocware.com  
 Tel: +49 173318

See [www.softwaremarket.nokia.com](http://www.softwaremarket.nokia.com) for more applications.

Contact information:  
Citrix Systems  
[www.citrix.com](http://www.citrix.com)

## Citrix ICA

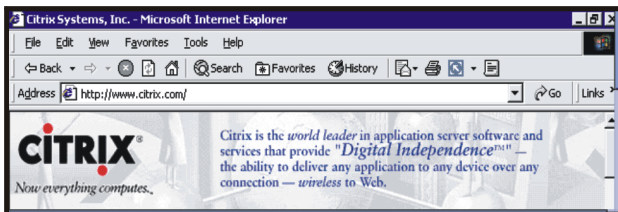


Figure 3

Citrix Systems, Inc. is a global leader in application server software and related services that offer organisations the ability to run any application on any device over any connection.

Citrix extends the reach of Windows and UNIX applications to virtually any client device, including wireless information appliances and mobile communications devices. By executing these applications on a central server farm and just displaying the screen on the device, Citrix delivers high performance over all connections - wired or wireless.

Through single-point administration and by allowing the use of existing devices and network infrastructure to run the latest applications Citrix provides significant cost reductions to corporations.

See [www.softwaremarket.nokia.com](http://www.softwaremarket.nokia.com) for more applications.



# F-Secure Anti-Virus

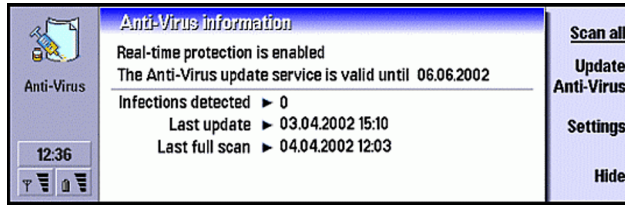


Figure 4

F-Secure Anti-Virus for Nokia 9200 Communicator Series is an antivirus application which, together with a virus definition update service, provides fully automatic protection against viruses and harmful content in all file types. All files are automatically scanned when they are saved, copied, downloaded, synchronised or otherwise modified. Files on memory cards are also scanned. F-Secure Anti-Virus supports several easy methods of updating the virus definition database. The virus definitions can be received automatically over the air or downloaded from a web server.

## Contact information:

F-Secure Corporation  
 Tammasaarenkatu 7  
 PL 24  
 00181 Helsinki  
 Finland

E-mail: [wireless-info@F-Secure.com](mailto:wireless-info@F-Secure.com)  
[www.F-Secure.com](http://www.F-Secure.com)  
 Tel: +358 (0)9 2520 0700  
 Fax: +358 (0)9 2520 5001

See [www.softwaremarket.nokia.com](http://www.softwaremarket.nokia.com) for more applications.

**Contact information:**

F-Secure Corporation  
Tammasaarenkatu 7  
PL 24  
00181 Helsinki  
Finland

E-mail: [wireless-info@F-Secure.com](mailto:wireless-info@F-Secure.com)  
[www.F-Secure.com](http://www.F-Secure.com)  
Tel: +358 (0)9 2520 0700  
Fax: +358 (0)9 2520 5001

## F-Secure FileCrypto

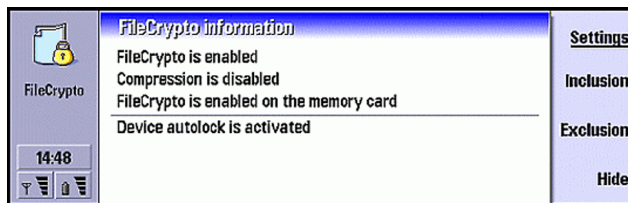


Figure 5

F-Secure FileCrypto for Nokia 9200 Communicator Series is a file encryption application that automatically encrypts all files before storing them, and decrypts the files when they are opened again. Confidential documents, calendar data, e-mail messages and other personal files remain safe, even when unauthorised persons gain access to the device. The files are encrypted with the strong 128-bit AES algorithm.

See [www.softwaremarket.nokia.com](http://www.softwaremarket.nokia.com) for more applications.

## F-Secure SSH

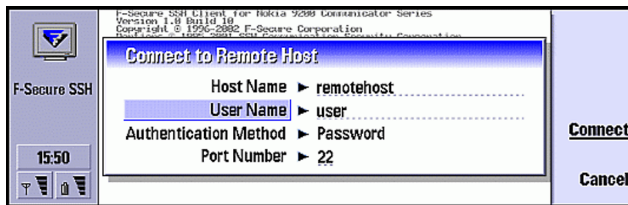


Figure 6

F-Secure SSH for Nokia 9200 Communicator Series provides secure Internet connections for the mobile workforce. It is based on a traditional client-server model. F-Secure SSH allows remote access to third party applications such as e-mail and Intranet without security concerns. It can also be used for the secure remote management of network servers and hosts. F-Secure SSH closes all security holes in remote Internet access. It provides automatic strong session encryption, data integrity protection, and authentication on both ends of the connections. To improve networking performance, F-Secure SSH incorporates compression for the connections.

### Contact information:

F-Secure Corporation  
Tammasaarenkatu 7  
PL 24  
00181 Helsinki  
Finland

E-mail: [wireless-info@F-Secure.com](mailto:wireless-info@F-Secure.com)  
[www.F-Secure.com](http://www.F-Secure.com)  
Tel: +358 (0)9 2520 0700  
Fax: +358 (0)9 2520 5001

See [www.softwaremarket.nokia.com](http://www.softwaremarket.nokia.com) for more applications.

**Contact information:**  
Nokia Software Market  
[www.softwaremarket.nokia.com](http://www.softwaremarket.nokia.com)

## Backup



Figure 7

Backup provides your Nokia 9210i Communicator with the ability to automatically back up your communicator data to a memory card. It is possible to make several back-up copies of your data. The backing up can be started manually or automatically at any selected time. You can also define the back-up frequency and time scale, and select the data you want to back up (all data, applications, calendar, contacts, documents or messages). You can also restore the data you have backed up, if needed.

See [www.softwaremarket.nokia.com](http://www.softwaremarket.nokia.com) for more applications.

# Tarantella Enterprise 3



Figure 8

Tarantella® Enterprise 3 software provides Nokia 9210i Communicator users with wireless access to all of their corporate applications running on UNIX, Microsoft Windows or Mainframe servers. Tarantella Enterprise 3 acts as a Wireless Application Gateway to existing applications and services, providing an elegant and fast wireless enablement solution that does not require modification, configuration or alterations to application servers.

Tarantella Enterprise 3 software is the first non-intrusive application and data centralization solution. It simplifies management and reduces infrastructure costs, offering immediate gains in productivity and organic scalability.

Using Tarantella software, users may access applications remotely from their Nokia 9210i Communicator or from another client device (anything from a thin client to a top-of-the-range PC).

See [www.softwaremarket.nokia.com](http://www.softwaremarket.nokia.com) for more applications.

Contact information:  
Tarantella  
[www.tarantella.com](http://www.tarantella.com)

**Contact information:**

M.I.T. Systems  
 Szt. Gellért tér 3  
 H-1111 Budapest  
 Hungary

E-mail:  
 info@mitsystems.hu  
 www.mitsystems.hu  
 Tel: +36 1 209 9288  
 Fax: +36 1 279 1254

## M.I.T. Remapper

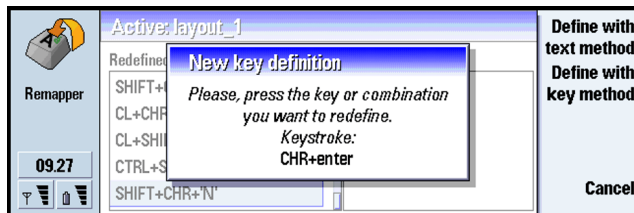


Figure 9

M.I.T. Remapper is a program which enables you to customise your communicator's keyboard layout.

With Remapper, you can define and save custom keyboard layouts to suit your typing style and language. You can, for example, define single keystrokes for typing the national or accented letters of your language, or abbreviations you use frequently.

See [www.softwaremarket.nokia.com](http://www.softwaremarket.nokia.com) for more applications.

# Remote Control for Nokia 9210i

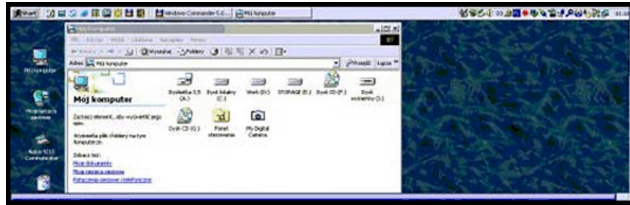


Figure 10

With Remote Control for Nokia 9210i, you can have full mobile access to your PC using your Nokia 9210i Communicator. You can connect your Nokia 9210i Communicator to your PC via the Internet to collect information, edit documents, view files, and read e-mail, for example. Remote Control gives you full control of the mouse and keyboard. Remote Control is developed for people who are travelling and need real-time access to their PC no matter where they are.

**Contact information:**  
Bitween s.r.l  
Via Biancardi, 2  
20149 MILAN  
Italy

E-mail:  
bitween@bitween.com  
www.bitween.com  
Tel: +39 0243911470  
Fax: +39 0243988467

See [www.softwaremarket.nokia.com](http://www.softwaremarket.nokia.com) for more applications.

**Contact information:**

Paragon Software GmbH  
 Pearl Str. 1  
 D-79426 Buggingen  
 Germany

E-mail:

info@epocware.com  
 www.epocware.com  
 Tel: +49 173318

## ZIP-manager

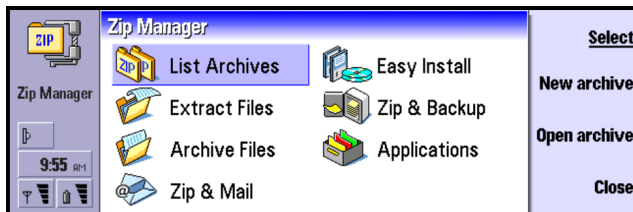


Figure 11

Zip Manager is the most powerful and easy-to-use file compression program for The Nokia 9210i Communicator. With Zip manager you can handle Zip files in a more conventional way. If you are new to zip archives, the wizards will guide you, step by step, through the most common tasks related to zip files.

With Zip Manager you can:

- Unpack zipped email attachments
- Unpack zip files downloaded from the Internet
- Create your own zip archives
- Zip files and send them by email
- Archive rarely used files and applications to save memory (up to 75%)
- Backup your data with compression.

See [www.softwaremarket.nokia.com](http://www.softwaremarket.nokia.com) for more applications.



## RealOne Player



Figure 12

RealOne Player lets you play audio and video files of the RealAudio and RealVideo formats on your Nokia 9210i Communicator. You can download these files to your communicator from a compatible PC for playback, or you can play files over the wireless network by streaming them to your communicator.

Contact information:  
RealNetworks  
[www.realnetworks.com](http://www.realnetworks.com)

See [www.softwaremarket.nokia.com](http://www.softwaremarket.nokia.com) for more applications.

Contact information:  
Macromedia  
[www.macromedia.com](http://www.macromedia.com)

## Flash Player

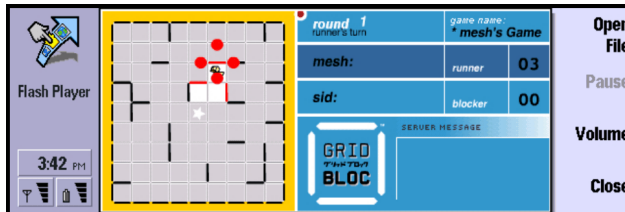


Figure 13

Flash Player supports Macromedia Flash content which is widely used to deliver motion, sound and interactivity. So now you can enjoy Macromedia Flash movies, cartoons and even games right from your communicator. Plus, you'll be able to view engaging presentations, e-learning content, even personal productivity applications that keep you on the move.

See [www.softwaremarket.nokia.com](http://www.softwaremarket.nokia.com) for more applications.

# Mobile Evidence-Based Medicine Guidelines

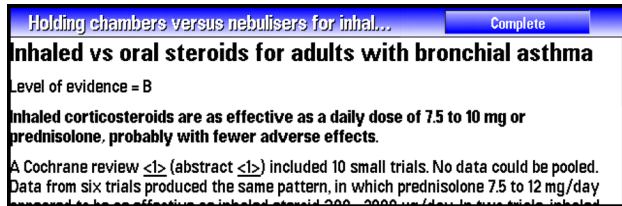


Figure 14

Contact information:  
Duodecim Medical  
Publications Ltd  
[www.ebm-guidelines.com](http://www.ebm-guidelines.com)

Mobile Evidence-Based Medicine Guidelines (EBM Guidelines) is a database including more than 900 articles on most important diseases. Individual treatment recommendations are supported by evidence summaries based on high-quality systematic review. Many high-quality dermatological pictures have been linked to relevant articles. The Guidelines gives physicians easy and fast point-of-care access to updated and reliable medical information whenever needed. The texts are concise and easily readable from Nokia Communicators screen. Search program and core database are located on the memory card.

The mobile EBM Guidelines is updated frequently. Co-operation with the Update Software (UK), the publisher of the Cochrane Library guarantees the internationally valid high quality of each evidence coded treatment recommendation. Evidence based coding make the contents globally usable by definition.

See [www.softwaremarket.nokia.com](http://www.softwaremarket.nokia.com) for more applications.

**Contact information:**

TomTom  
Spuistraat 112-114 I  
1012 VA Amsterdam  
The Netherlands

E-mail: [info@tomtom.com](mailto:info@tomtom.com)  
[www.tomtom.com](http://www.tomtom.com)  
Tel: +31 (0)20 4469 469  
Fax: +31 (0)20 4469 496

## TomTom CityMaps

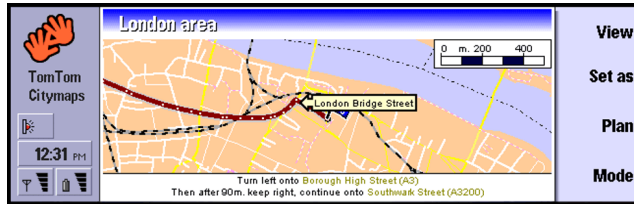


Figure 15

TomTom CityMaps is a city map and route planning application for the Nokia 9200 Communicator Series. It can plan perfect routes within a city. Using detailed and accurate city maps you can find your way around 200,000 cities in Europe. You can gain information on one-way systems, request a route that avoids known traffic hotspots, and view pedestrian shortcuts, for example. Whether you walk, drive or take the bus, TomTom CityMaps can be your own personal navigator around Europe.

See [www.softwaremarket.nokia.com](http://www.softwaremarket.nokia.com) for more applications.

# TomTom RoutePlanner

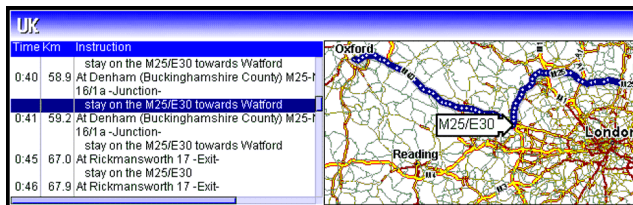


Figure 16

TomTom RoutePlanner is a road map and route planning application for the Nokia 9200 Communicator Series. With TomTom RoutePlanner you can find your way in all major European countries and American states. It shows you the major road networks on different scales and gives you the best way to get from one city to another. You can even attach a GPS receiver, allowing you to see your exact location on the map.

**Contact information:**  
TomTom  
Spuistraat 112-114 I  
1012 VA Amsterdam  
The Netherlands

E-mail: [info@tomtom.com](mailto:info@tomtom.com)  
[www.tomtom.com](http://www.tomtom.com)  
Tel: +31 (0)20 4469 469  
Fax: +31 (0)20 4469 496

See [www.softwaremarket.nokia.com](http://www.softwaremarket.nokia.com) for more applications.

**Contact information:**

Twiddlebit Software  
 23 Worcester Avenue  
 Hardwick, Cambridge  
 CB3 7XG  
 UK

E-mail:  
 info@twiddlebit.com  
 www.twiddlebit.com

## Plan6

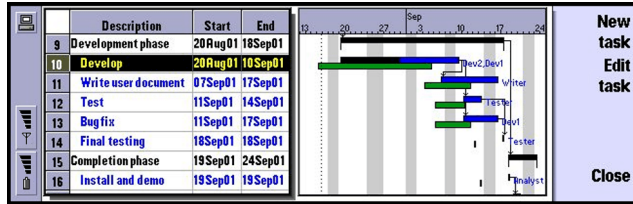


Figure 17

Plan6 is a Microsoft Project compatible project planner for the Nokia 9200 Communicator Series. You can use it as a stand-alone project planning tool, or in conjunction with Microsoft Project. Plan6 allows you to create the initial project, refine the project and track its progress. Project plans created with Microsoft Project on a PC can be taken out of the office and updated on the move. The project plan can subsequently be transferred back to the PC upon return to the office.

See [www.softwaremarket.nokia.com](http://www.softwaremarket.nokia.com) for more applications.

# Mobile Sales Assistant



Figure 18

Mobile Sales Assistant is a client-server application that enables the online registration of orders using the Nokia 9210i Communicator. The client is installed on the communicator, and the server is based on a SQL server or Oracle database. With Mobile Sales Assistant, sales representatives can remotely register clients' orders directly to the company's system for instant realisation. During the registration of orders, sales representatives have access to the client data, prices, and the current level of stocks, as well as to other data available on the company's system.

## Contact information:

Speed Sp. z o.o.  
ul. Energetykw 5  
81-184 Gdynia  
Poland

## E-mail:

kontakt@speednet.pl  
www.speednet.pl  
Tel: + 48 58 7855240  
Fax: + 48 58 7855242

See [www.softwaremarket.nokia.com](http://www.softwaremarket.nokia.com) for more applications.

**Contact information:**

Benoit Dupont - Kylom  
 25, Rue Pauline Borghèse  
 92200 Neuilly sur Seine  
 France

E-mail:

support@kylom.com

www.kylom.com

Tel: +33 1 4745 1119

Fax: +33 1 4745 1133

## Pocket Folio

| Update all shares  |            |           |                 |
|--------------------|------------|-----------|-----------------|
| Danone             | 131,20 EUR | 18-Jan-02 | +0,6% in 1 days |
| Deutsche Bank      | 77,80 EUR  | 18-Jan-02 | -0,2% in 1 days |
| Dexia              | 16,77 EUR  | 18-Jan-02 | +2,8% in 1 days |
| Eurotunnel         | 1,11 EUR   | 18-Jan-02 | -2,6% in 1 days |
| Faurecia           | 59,20 EUR  | 18-Jan-02 | -0,5% in 1 days |
| Flem Series II USD | 15,07 USD  | 14-Jan-02 |                 |
| France Telecom     | 39,40 EUR  | 18-Jan-02 | -1,8% in 1 days |
| Groupe Flo         | 19,09 EUR  | 18-Jan-02 | +3,4% in 1 days |
| HSBC Holdings      | 12,62 EUR  | 18-Jan-02 | -3,6% in 1 days |
| Hermès Intl        | 180,70 EUR | 18-Jan-02 | +2,6% in 1 days |

Figure 19

With Pocket Folio, you can manage your portfolio of shares and other investments on your Nokia 9210i Communicator. Pocket Folio keeps track of the details of each transaction and every single day of quotation, and makes them available in several views - detailed or consolidated, in text or graphical mode. You can collect quotes and exchange rates via an automatic Internet connection, and update all your accounts accordingly. Pocket Folio can be installed in English, French or German.

See [www.softwaremarket.nokia.com](http://www.softwaremarket.nokia.com) for more applications.



## ElbRUS 9210



Figure 20

ElbRUS 9210 is the first Full Cyrillic Localization kit for Nokia 9210i Communicator. It seamlessly integrates with the EPOC OS, allowing Russian-speaking 9210i users to work with their native language as if it was built into device. All user interface items are also translated to Russian.

With ElbRUS you can:

- work with documents in both Russian and European languages,
- send and receive email, SMS and faxes using Cyrillic character sets and,
- browse most Russian Web and WAP pages.

ElbRUS includes:

- System fonts identical to built-in ones, with Russian letters added.
- Keyboard driver with indication of current mode (Russian/Latin).
- Two keyboard layouts - standard and phonetic.
- Russian locale settings (date/time format, currency code, day, month names etc.)

See [www.softwaremarket.nokia.com](http://www.softwaremarket.nokia.com) for more applications.

### Contact information:

MacCentre Inc.  
14 Nikoloyamskaya street,  
109240 Moscow  
Russia

Email:

[developers@maccentre.ru](mailto:developers@maccentre.ru)  
[www.hpc.ru/9210](http://www.hpc.ru/9210)

Tel: +7 095 232-1738

Fax: +7 095 915-5342

**Contact information:**

AAC Global  
Tekniikantie 21  
FIN-02150 ESPOO  
Finland

E-mail:  
info@aacglobal.com  
www.aacglobal.com  
Tel: +358 9 4766 7800

# AAC Mobile Dictionary

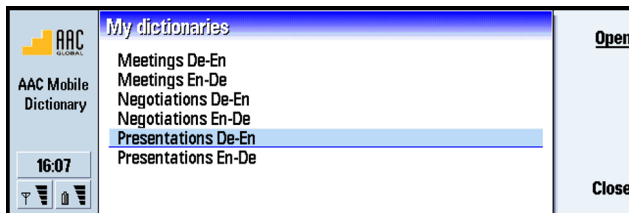


Figure 21

AAC Mobile Dictionary is a dictionary for Nokia 9210i Communicator with user-selectable content.

Once you acquire a licensing key from AAC Global, you can download content for the dictionary from the AAC portal, where special glossaries are available. You can then update the dictionary in your communicator using PC Suite.

See [www.softwaremarket.nokia.com](http://www.softwaremarket.nokia.com) for more applications.

# M.I.T. Dictionary



Figure 22

M.I.T. Dictionary is an application framework with add-on dictionary database files. Dictionary database files currently available include the following language pairs: English-Hungarian, German-Hungarian, and German-English. In addition to looking up words, you can extend the database by adding new entries and definitions, and even modify the definitions and existing entries. You can annotate entries and save your annotations as ordinary text documents. M.I.T. Dictionary has configurable search options.

## Contact information:

M.I.T. Systems  
Szt. Gellért tér 3  
H-1111 Budapest  
Hungary

## E-mail:

info@mitsystems.hu  
www.mitsystems.hu  
Tel: +36 1 209 9288  
Fax: +36 1 279 1254

See [www.softwaremarket.nokia.com](http://www.softwaremarket.nokia.com) for more applications.

**Contact information:**

Yellow Computing  
 Hanns-Martin-Schleyer-  
 Strasse 1  
 D-74177 Bad Friedrichshall  
 Germany

E-mail:  
 info@yellow.de  
 www.yellow.de  
 Tel: +49 7136 95110  
 Fax: + 49 7136 951111

## Pro'Lingua Translator

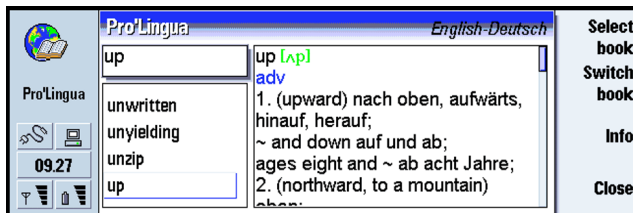


Figure 23

ProLingua Translator is a German-English and English-German electronic dictionary of up to 100,000 words and phrases. The vocabulary ranges from colloquial to specialised business language.

The dictionary contains a comprehensive list of irregular verbs and grammar notes. It also features a phonetic script to help pronounce the foreign language.

See [www.softwaremarket.nokia.com](http://www.softwaremarket.nokia.com) for more applications.

## Ozicom Hebrew

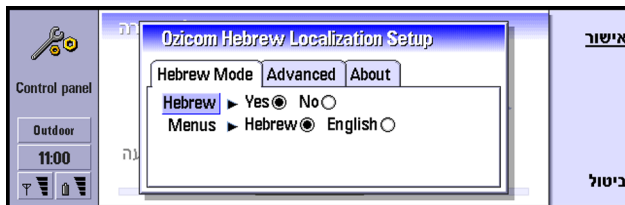


Figure 24

Ozicom Hebrew is a Hebrew localisation package for the Nokia 9210i Communicator. It provides you with a localised communicator user interface, with all the dialogs, notes and messages of the standard communicator applications translated into Hebrew.

Ozicom Hebrew also includes support for the Hebrew Microsoft Office applications (Word, Excel, PowerPoint and Outlook), and allows you to view Hebrew web pages as well as send and receive Hebrew e-mail messages and faxes. You can read and write Hebrew documents using either the English or Hebrew user interface. Ozicom Hebrew is easy to uninstall and reinstall, allowing you to use it only when you need it.

### Contact information:

Ozicom Communications  
26 Hartow Str.  
67630 Tel Aviv  
Israel

E-mail:

support@ozicom.co.il

Tel: + 972 3 6313135

Fax: + 972 3 7305924

See [www.softwaremarket.nokia.com](http://www.softwaremarket.nokia.com) for more applications.

**Contact information:**

mBrain Software  
Bevrijdingsplein 39  
2321 BX Leiden  
The Netherlands

E-mail:

info@mbrainsoftware.com

www.mbrainsoftware.com

Tel: +31 71528 85 91

## PDF+

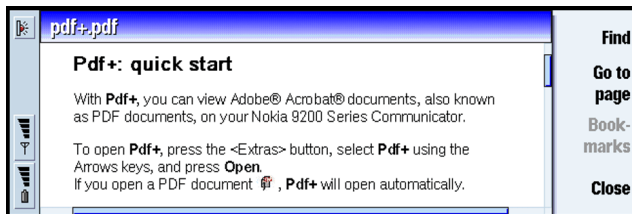


Figure 25

PDF+ is a viewer for Adobe Acrobat files, also known as PDF (Portable Document Format) files. Using PDF+, you can view and print the content most PDF files, including text, line drawings and bitmaps.

PDF+ allows you to search for strings of text in documents, and copy selected parts of text to other applications. You can follow bookmarks and links to other pages in a document, and links to web pages if you have the web browser installed on your communicator.

See [www.softwaremarket.nokia.com](http://www.softwaremarket.nokia.com) for more applications.

## Irma - the Infrared Mobile Accessory



*Figure 26*

Irma - the Infrared Mobile Accessory enables you to show PowerPoint presentations without a laptop computer, using your Nokia 9210i Communicator wirelessly.

To show a presentation using Irma, you first convert it with the Windows software included, and then store the presentation in your communicator. After this, you connect the Irma to a compatible data projector or a monitor, and show your presentation.

**Contact information:**

Corporate Keys Ltd.  
c/o Flander Oy  
Satakunnankatu 18 B  
FIN-33210 TAMPERE  
Finland

E-mail:

info@corporatekeys.com  
www.corporatekeys.com  
Tel: + 358 3 233 9000  
Fax: + 358 3 233 9090

See [www.softwaremarket.nokia.com](http://www.softwaremarket.nokia.com) for more applications.

**Contact information:**

Purple Software Limited  
 Purple House  
 12 Corporation Street  
 High Wycombe  
 Buckinghamshire HP 13 6TQ  
 England

## E-mail:

info@purplesoftware.com  
 www.purplesoftware.com  
 Tel: +44 (0)1494 750300  
 Fax: +44 (0)1494 750301

## Checkers

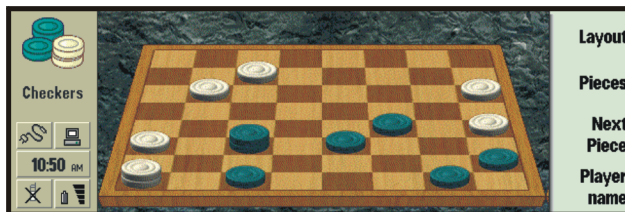


Figure 27

Oxford Softwork's Checkers, brought to you by Purple Software, is the classic strategy board game with the goal of capturing the opponent's pieces by jumping over them. The game, also called Draughts, is deceptively simple yet full of intricacy. Oxford Softwork's Checkers application, based on a world-class artificial intelligence game engine, allows you to play a stimulating and challenging game against the 9210i or a human opponent or if you prefer watch the communicator play itself. The application offers four different playing levels, ranging from beginner to expert. Multiple views, piece sets and background alternatives allow the user the option to personalise the screen layout. Additional features include replay of games, take back moves and request the computer to suggest a move. The built-in online help files provide helpful advice on how to make the most out of the game. Oxford Softwork's Checkers is the perfect companion for quality leisure time!

See [www.softwaremarket.nokia.com](http://www.softwaremarket.nokia.com) for more applications.



# Chess

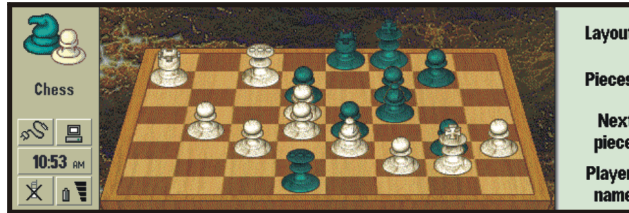


Figure 28

Oxford Softwork's Chess, brought to you by Purple Software, is a stimulating and challenging game perfectly suited for beginners and champions alike. It is based on a world-class artificial intelligence game engine, giving you the option to play against the 9210i, a human opponent, or watch the communicator play itself.

The impressive visual appearance includes both 2D and 3D views, the choice of several board layouts and multiple piece sets. Made a bad move? Don't worry, you can always take back pieces and replay moves. The save and re-load games feature truly allow users the flexibility to play a game anywhere, any time. If you feel that you are running out of options, don't forget that you can always ask the computer to suggest a move, and the built-in online tutorial provides further advice on rules, moves and move notation. Oxford Softwork's Chess offering is simply the number one choice for strategy game aficionados!

## Contact information:

Purple Software Limited  
 Purple House  
 12 Corporation Street  
 High Wycombe  
 Buckinghamshire HP 13 6TQ  
 England

## E-mail:

info@purplesoftware.com  
 www.purplesoftware.com  
 Tel: +44 (0)1494 750300  
 Fax: +44 (0)1494 750301

See [www.softwaremarket.nokia.com](http://www.softwaremarket.nokia.com) for more applications.

**Contact information:**

Rage Software PLC  
Martins Building  
Water Street  
High Wycombe  
Liverpool L2 3SP  
England

## E-mail:

sales@rage.co.uk

www.rage.com

Tel: +44 (0) 151 237 2200

Fax: +44 (0) 151 237 2201

## Gadget Golf



Figure 29

Gadget Golf is a 3D golf game for Nokia 9210i Communicator. Up to four human or computer-controlled players can play on one device. You can select between three different skill levels. The game features a full 18 hole golf course, a full set of clubs, as well as wind and weather effects.

The visual effects of the full colour gaming environment include a fully detailed golf course, animated golfer, textured landscape with bunkers, water hazards, rough, and tree-lined out of bounds.

See [www.softwaremarket.nokia.com](http://www.softwaremarket.nokia.com) for more applications.

# Reversi

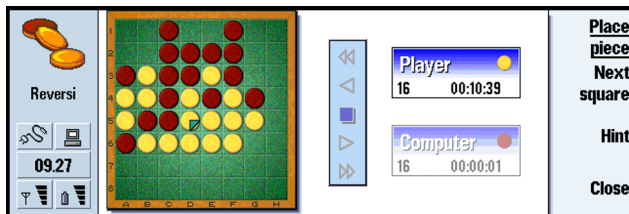


Figure 30

Reversi is a game of territorial occupation involving placement and capture. It takes a few minutes to learn but a lifetime to master, making it suitable for players of all abilities. Reversi features multiple views, and choice of board layouts and piece sets.

## Contact information:

Purple Software Limited  
 Purple House  
 12 Corporation Street  
 High Wycombe  
 Buckinghamshire HP 13 6TQ  
 England

## E-mail:

info@purplesoftware.com  
 www.purplesoftware.com  
 Tel: +44 (0)1494 750300  
 Fax: +44 (0)1494 750301

See [www.softwaremarket.nokia.com](http://www.softwaremarket.nokia.com) for more applications.

**Contact information:**

Mobil Ask  
 Hajogyari Sziget 323.  
 H-1033 Budapest  
 Hungary

E-mail:  
 company@mobilask.com  
 www.mobilask.hu  
 Tel: +36 1 430 2360  
 Fax: +36 1 430 2361

# Torpedo



*Figure 31*

Waiting for the plane? Sitting in a pointless, two-hour meeting? Do you remember how exciting it was to play torpedo with your best friend during the classes in the school? With the Torpedo Game of Remek Online you can fight against the fleet of 9210i and feel the thrill of the battle again.

The aim of the game is to find and sink the 9210i's ships before you run out of shots. The game is playable on three levels; ensign, captain and admiral. At ensign level you have 48 torpedoes you can use to find and sink the computers ships. When you go up to captain you have only 36 torpedoes while an admiral has only 24 (it's never easy at the top).

See [www.softwaremarket.nokia.com](http://www.softwaremarket.nokia.com) for more applications.